

Animal Care & Control Team of Philadelphia

2014 Shelter Statistics - All Animals

	Jan	Feb	Mar	Apr	May	Jun	Jul	Aug	Sept	Oct	Nov	Dec	Total
Intake	1,618	1,349	1,879	2,187	2,814	2,704	-	-	-	-	-	-	12,551
Stray	937	753	1,197	1,443	1,918	1,882							8,130
Surrendered by Owner	672	591	674	744	889	814							4,384
Transferred In	9	5	8	-	7	8							37
Live Release	1,286	1,132	1,387	1,495	1,750	1,760	-	-	-	-	-	-	8,810
Adopted	601	514	544	527	513	629							3,328
Returned to Owner	64	64	93	83	112	96							512
Transferred to Rescue	549	496	676	792	989	901							4,403
Released	72	58	74	93	136	134							567
Total Euthanized	388	291	325	450	513	746	-	-	-	-	-	-	2,713
Owner Intended Euthanasia	33	49	52	49	69	87							339
All Other Euthanasia	355	242	273	401	444	659							2,374
Died	21	14	24	71	44	121							295
Missing	1	5	6	5	17	30							64

Live Release Rate	77%	80%	81%	77%	77%	70%							76%
--------------------------	-----	-----	-----	-----	-----	-----	--	--	--	--	--	--	-----

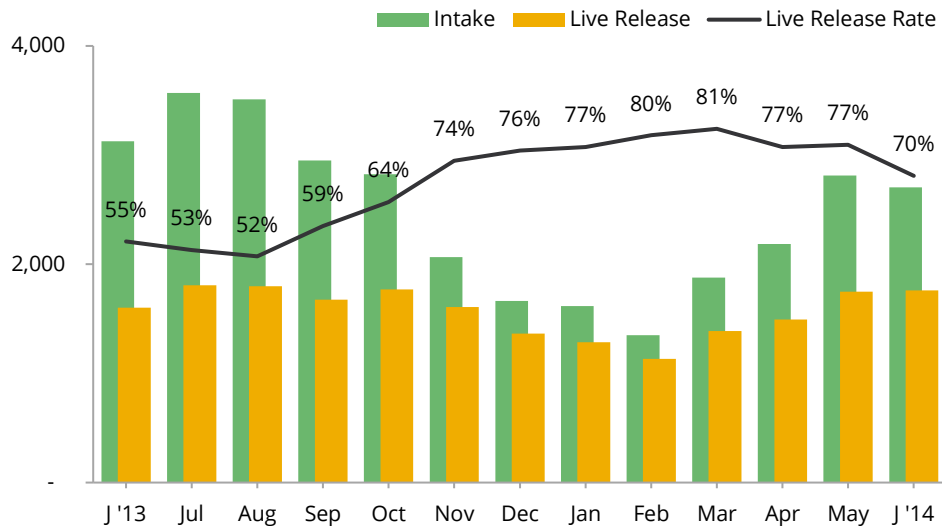
Live Release Rate = Live Release / (Live Release + Total Euthanized)

Adjusted Live Release Rate	78%	82%	84%	79%	80%	73%							79%
-----------------------------------	-----	-----	-----	-----	-----	-----	--	--	--	--	--	--	-----

Adjusted Live Release Rate = Live Release / (Live Release + (Total Euthanized - Owner Intended Euthanasia))

The June Live Release Rate does not include 151 animals that died or were lost in care, or 187 animals that were dead on arrival.

Month End Animal Count	1,019	922	1,057	1,223	1,714	1,762							n/a
Placed in Foster Care	146	130	233	366	476	406							1,757
Spay/Neuter Surgeries	634	585	658	709	672	973							4,231



Animal Care & Control Team of Philadelphia

2014 Shelter Statistics - Dogs

	Jan	Feb	Mar	Apr	May	Jun	Jul	Aug	Sept	Oct	Nov	Dec	Total
Intake	674	591	686	677	726	733	-	-	-	-	-	-	4,087
Stray	344	301	397	337	379	382							2,140
Surrendered by Owner	326	288	286	340	344	345							1,929
Transferred In	4	2	3	-	3	6							18
Live Release	440	455	492	503	555	494	-	-	-	-	-	-	2,939
Adopted	122	123	126	116	80	102							669
Returned to Owner	50	55	75	68	96	80							424
Transferred to Rescue	268	277	291	319	379	312							1,846
Released	n/a	n/a	n/a	n/a	n/a	n/a	n/a	n/a	n/a	n/a	n/a	n/a	n/a
Total Euthanized	223	152	161	199	157	203	-	-	-	-	-	-	1,095
Owner Intended Euthanasia	19	27	30	24	31	50							181
All Other Euthanasia	204	125	131	175	126	153							914
Died	1	5	1	4	-	5							16
Missing	-	-	3	1	-	-							4

Live Release Rate	66%	75%	75%	72%	78%	71%							73%
--------------------------	-----	-----	-----	-----	-----	-----	--	--	--	--	--	--	-----

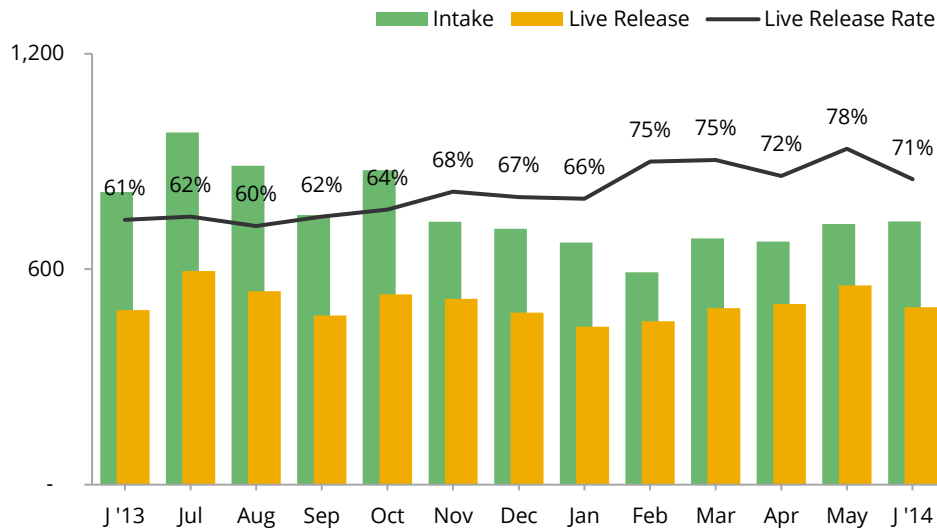
Live Release Rate = Live Release / (Live Release + Total Euthanized)

Adjusted Live Release Rate	68%	78%	79%	74%	81%	76%							76%
-----------------------------------	-----	-----	-----	-----	-----	-----	--	--	--	--	--	--	-----

Adjusted Live Release Rate = Live Release / (Live Release + (Total Euthanized - Owner Intended Euthanasia))

The June Live Release Rate does not include 5 animals that died or were lost in care, or 71 animals that were dead on arrival.

Month End Animal Count	220	199	228	199	214	245							n/a
Placed in Foster Care	35	31	19	13	27	22							147
Spay/Neuter Surgeries	170	184	166	162	148	141							971



Animal Care & Control Team of Philadelphia

2014 Shelter Statistics - Cats

	Jan	Feb	Mar	Apr	May	Jun	Jul	Aug	Sept	Oct	Nov	Dec	Total
Intake	855	677	1,112	1,370	1,755	1,682	-	-	-	-	-	-	7,451
Stray	556	403	738	993	1,301	1,284							5,275
Surrendered by Owner	294	271	369	377	450	396							2,157
Transferred In	5	3	5	-	4	2							19
Live Release	777	628	844	913	958	1,060	-	-	-	-	-	-	5,180
Adopted	477	386	403	392	428	519							2,605
Returned to Owner	14	9	18	15	15	16							87
Transferred to Rescue	223	187	367	430	421	403							2,031
Released	63	46	56	76	94	122							457
Total Euthanized	148	113	141	197	293	459	-	-	-	-	-	-	1,351
Owner Intended Euthanasia	14	22	21	25	38	35							155
All Other Euthanasia	134	91	120	172	255	424							1,196
Died	20	9	19	66	40	89							243
Missing	1	5	2	3	6	25							42

Live Release Rate	84%	85%	86%	82%	77%	70%							79%
--------------------------	-----	-----	-----	-----	-----	-----	--	--	--	--	--	--	-----

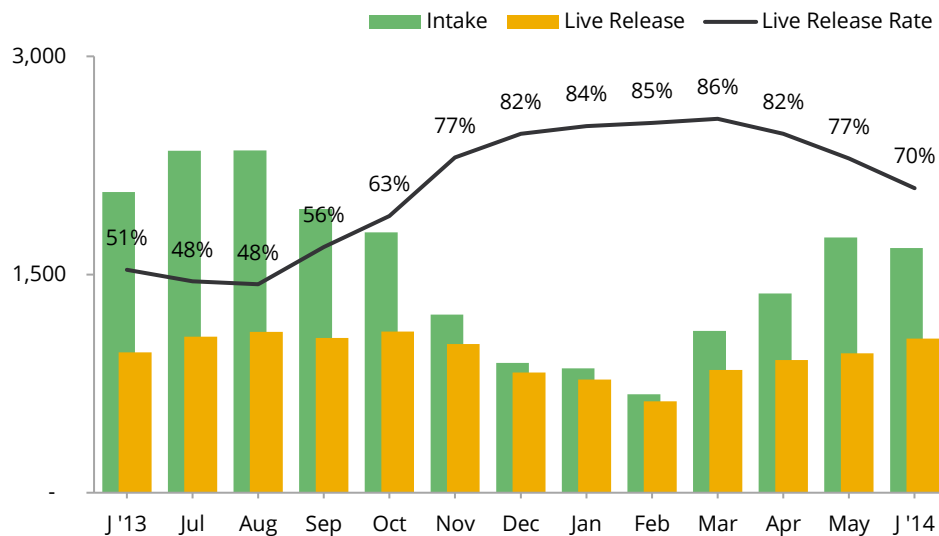
Live Release Rate = Live Release / (Live Release + Total Euthanized)

Adjusted Live Release Rate	85%	87%	88%	84%	79%	71%							81%
-----------------------------------	-----	-----	-----	-----	-----	-----	--	--	--	--	--	--	-----

Adjusted Live Release Rate = Live Release / (Live Release + (Total Euthanized - Owner Intended Euthanasia))

The June Live Release Rate does not include 114 animals that died or were lost in care, or 83 animals that were dead on arrival.

Month End Animal Count	782	700	804	994	1,451	1,502							n/a
Placed in Foster Care	111	99	208	351	449	384							1,602
Spay/Neuter Surgeries	464	401	487	546	523	832							3,253



Animal Care & Control Team of Philadelphia

2014 Shelter Statistics - Small Animals & Wildlife

	Jan	Feb	Mar	Apr	May	Jun	Jul	Aug	Sept	Oct	Nov	Dec	Total
Intake	89	81	81	140	333	289	-	-	-	-	-	-	1,013
Stray or Wildlife	37	49	62	113	238	216							715
Surrendered by Owner	52	32	19	27	95	73							298
Transferred In	-	-	-	-	-	-							-
Live Release	69	49	51	79	237	206	-	-	-	-	-	-	691
Adopted	2	5	15	19	5	8							54
Returned to Owner	-	-	-	-	1	-							1
Transferred to Rescue	58	32	18	43	189	186							526
Released	9	12	18	17	42	12							110
Total Euthanized	17	26	23	54	63	84	-	-	-	-	-	-	267
Owner Intended Euthanasia	-	-	1	-	-	2							3
All Other Euthanasia	17	26	22	54	63	82							264
Died	-	-	4	1	4	27							36
Missing	-	-	1	1	11	5							18

Live Release Rate	80%	65%	69%	59%	79%	71%								72%
--------------------------	-----	-----	-----	-----	-----	-----	--	--	--	--	--	--	--	-----

Live Release Rate = Live Release / (Live Release + Total Euthanized)

Adjusted Live Release Rate	80%	65%	70%	59%	79%	72%								72%
-----------------------------------	-----	-----	-----	-----	-----	-----	--	--	--	--	--	--	--	-----

Adjusted Live Release Rate = Live Release / (Live Release + (Total Euthanized - Owner Intended Euthanasia))

The June Live Release Rate does not include 32 animals that died or were lost in care, or 33 animals that were dead on arrival.

Month End Animal Count	17	23	25	30	49	15								n/a
Placed in Foster Care	-	-	6	2	-	-								8
Spay/Neuter Surgeries	-	-	5	1	1	-								7

