

ALL ANIMALS

	Jan	Feb	Mar	Apr	May	Jun	Jul	Aug	Sept	Oct	Nov	Dec	YTD
Live Release Rate	76%	78%	77%	73%	58%								72%
Intake	1,847	1,860	2,246	2,618	2,921								11,492
Stray	1,081	1,111	1,327	1,820	2,026								7,365
Owner Surrendered	719	698	869	750	843								3,879
Returned Adoption	45	49	43	48	52								237
Transferred In	2	2	7	-	-								11
Live Release	1,452	1,453	1,681	1,644	1,534								7,764
Adopted	376	326	421	332	421								1,876
Returned to Owner	60	85	76	87	76								384
Transferred to Rescue	1,016	1,042	1,184	1,225	1,037								5,504
Euthanized	469	407	489	601	1,118								3,084
Died/Lost in Care	34	16	22	37	76								185
Died	26	16	19	28	63								152
Missing	8	-	3	9	13								33
Month End Animal Count	987	972	1,027	1,362	1,556								n/a
Fostered	89	95	158	389	383								1,114
Spayed/Neutered	486	502	602	457	618								2,665

DOGS

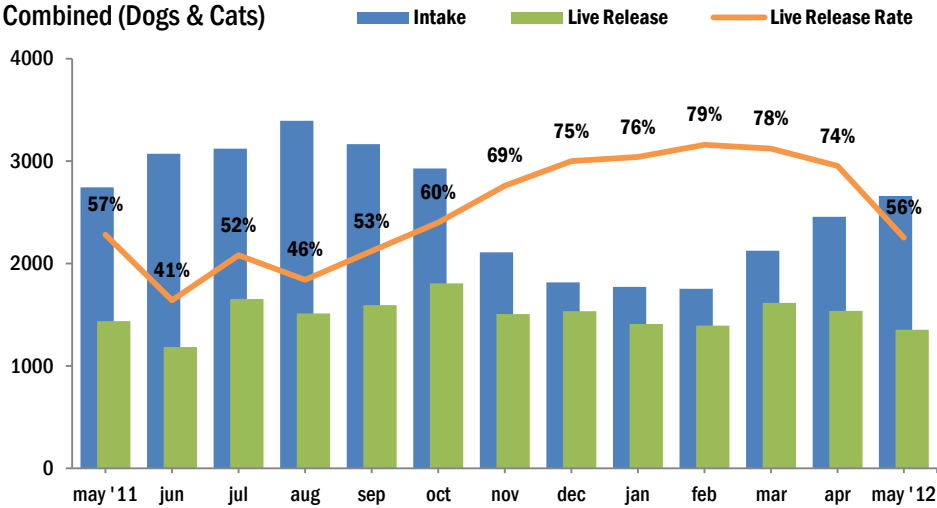
	Jan	Feb	Mar	Apr	May	Jun	Jul	Aug	Sept	Oct	Nov	Dec	YTD
Live Release Rate	68%	68%	66%	66%	62%								66%
Intake	787	786	817	758	761								3,909
Stray	414	421	402	382	357								1,976
Owner Surrendered	350	339	401	360	381								1,831
Returned Adoption	23	25	13	16	23								100
Transferred In	-	1	1	-	-								2
Live Release	509	535	554	494	458								2,550
Adopted	107	112	127	104	133								583
Returned to Owner	53	75	62	80	60								330
Transferred to Rescue	349	348	365	310	265								1,637
Euthanized	242	256	278	260	278								1,314
Died/Lost in Care	6	5	3	4	4								22
Died	4	5	2	2	3								16
Missing	2	-	1	2	1								6
Month End Animal Count	263	253	235	235	255								n/a
Fostered	27	23	31	31	37								149
Spayed/Neutered	141	154	160	137	156								748

Live Release Rate = Live Release / (Live Release + Euthanized); see <http://www.AsilomarAccords.org> for further information.
The Live Release Rate does not include animals that died or were lost in care, or animals that were dead on arrival.

CATS													
	Jan	Feb	Mar	Apr	May	Jun	Jul	Aug	Sept	Oct	Nov	Dec	YTD
Live Release Rate	82%	89%	86%	79%	54%								76%
Intake	985	967	1,306	1,697	1,898								6,853
Stray	603	604	835	1,291	1,429								4,762
Owner Surrendered	358	339	438	374	440								1,949
Returned Adoption	22	24	30	32	29								137
Transferred In	2	-	3	-	-								5
Live Release	899	858	1,060	1,043	893								4,753
Adopted	267	211	286	227	283								1,274
Returned to Owner	7	6	14	7	16								50
Transferred to Rescue	625	641	760	809	594								3,429
Euthanized	197	105	171	285	769								1,527
Died/Lost in Care	28	10	18	24	66								146
Died	22	10	16	23	57								128
Missing	6	-	2	1	9								18
Month End Animal Count	719	714	772	1,116	1,289								n/a
Fostered	62	71	127	357	346								963
Spayed/Neutered	342	343	440	318	461								1,904

SMALL ANIMALS AND WILDLIFE													
	Jan	Feb	Mar	Apr	May	Jun	Jul	Aug	Sept	Oct	Nov	Dec	YTD
Live Release Rate	60%	57%	63%	66%	72%								65%
Intake	75	107	123	163	262								730
Stray	64	86	90	147	240								627
Owner Surrendered	11	20	30	16	22								99
Returned Adoption	-	-	-	-	-								-
Transferred In	-	1	3	-	-								4
Live Release	44	60	67	107	183								461
Adopted	2	3	8	1	5								19
Returned to Owner	-	4	-	-	-								4
Transferred to Rescue	42	53	59	106	178								438
Euthanized	30	46	40	56	71								243
Died/Lost in Care	-	1	1	9	6								17
Died	-	1	1	3	3								8
Missing	-	-	-	6	3								9
Month End Animal Count	5	5	20	11	12								n/a
Fostered	-	1	-	1	-								2
Spayed/Neutered	3	5	2	2	1								13

Intake & Live Release Combined (Dogs & Cats)

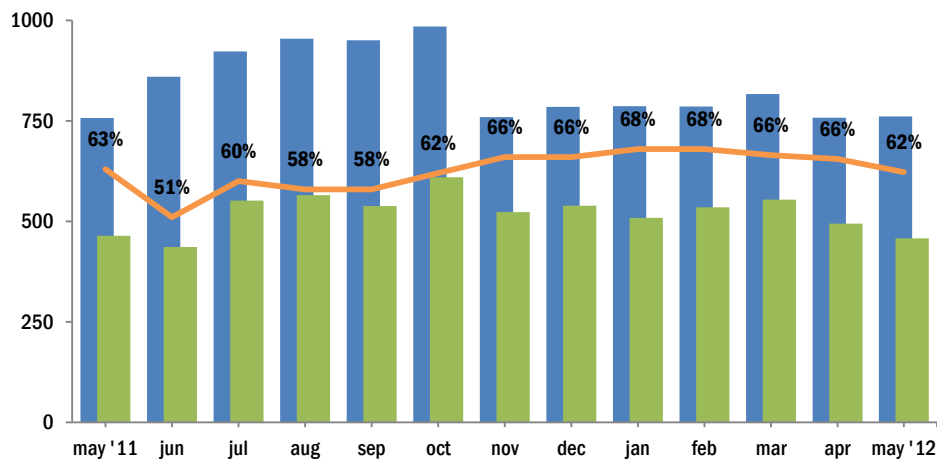


NOTES:

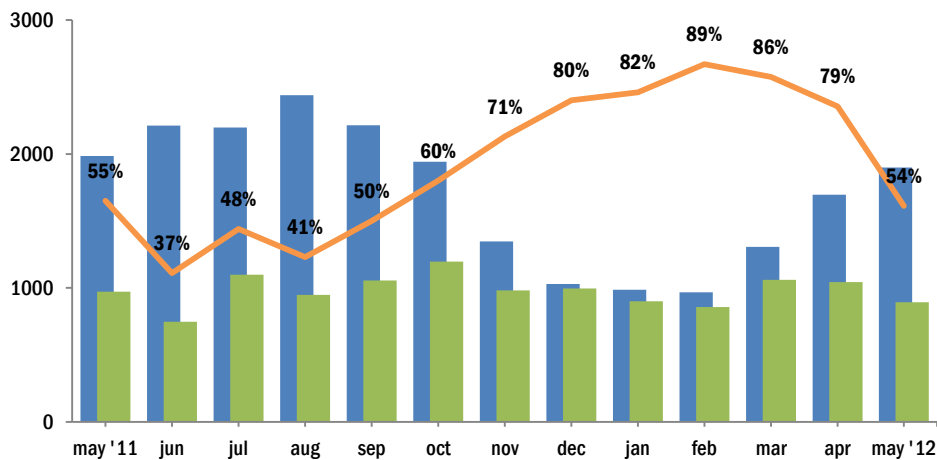
Live Release Rate, as dictated by the Asilomar Accords, the industry standard (see: asilomaraccords.org), is calculated by dividing Total Live Release (adoptions, outgoing transfers, and returns to owner) by Total Outcomes (adoptions, outgoing transfers, returns to owner, and euthanasias).

The Live Release Rate does not include animals that died or were lost in care, animals that were dead on arrival, or administrative transfers.

Dogs

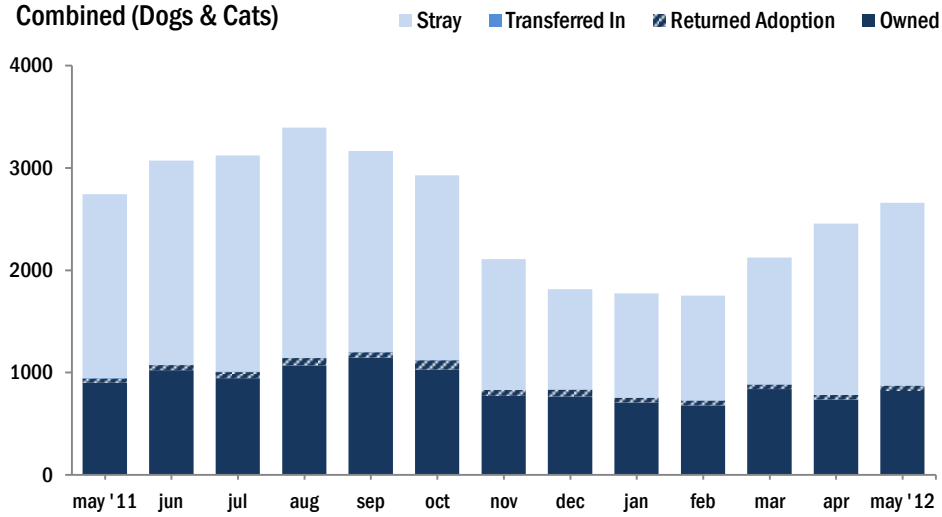


Cats



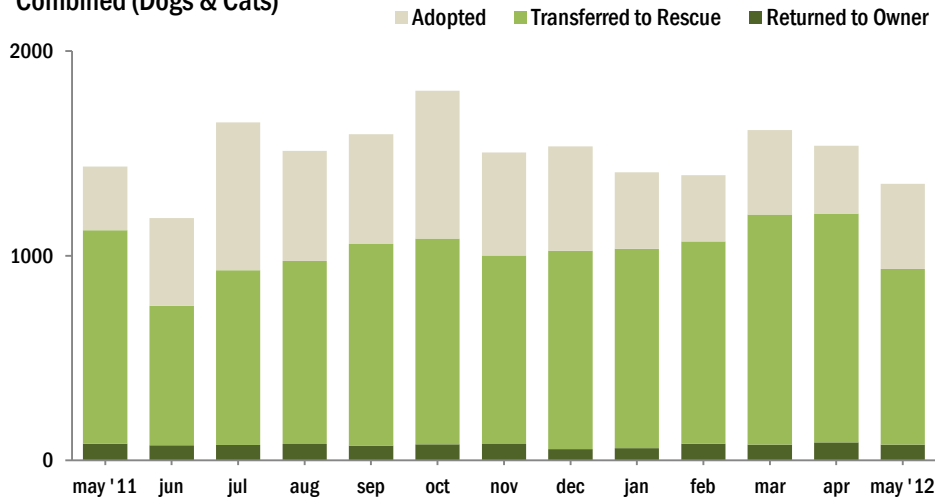
Source of Intake

Combined (Dogs & Cats)

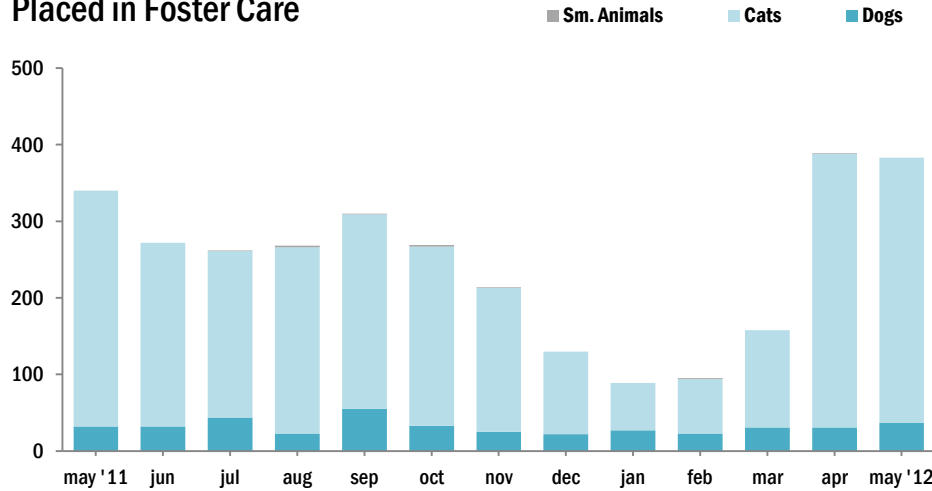


Live Releases

Combined (Dogs & Cats)



Placed in Foster Care



The **Foster Care Program** is one of the many life saving arms of ACCT Philly. The primary reason for foster care is to provide a temporary home for a potentially adoptable animal whose current condition is not manageable in a shelter setting and to alleviate overcrowding. ACCT Philly receives more animals than there is space, and so moving animals into foster homes not only saves them, but also ensures that newly arriving animals have cage space.

Spay/Neuter Surgeries

