

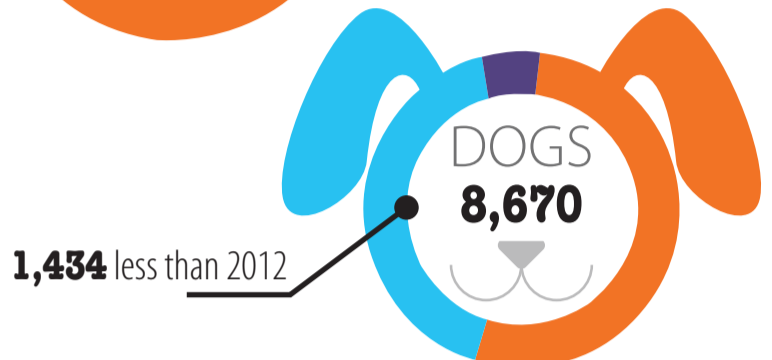
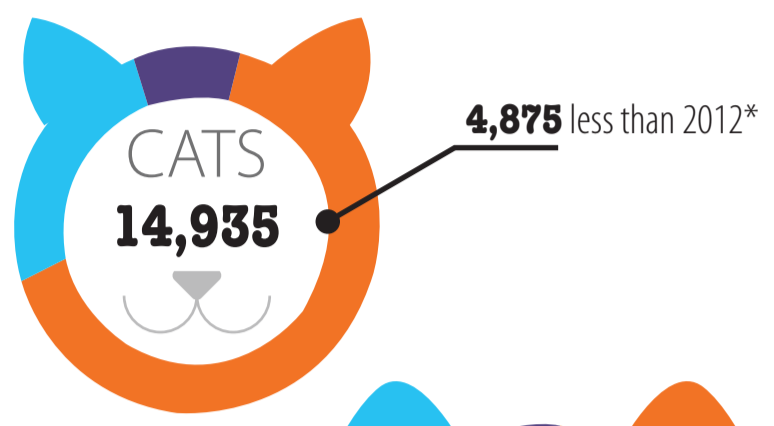
For the second year in a row, ACCT Philly **euthanasia rates have fallen dramatically.**

Intake is at an all time low.

We are helping more pets stay in their homes and spay/neuter efforts have resulted in fewer unplanned litters.

Total intake was **25,287**.

■ STRAY
 ■ SURRENDERED
 ■ TRANSFERRED IN



* Cat intake has dropped significantly thanks to S/TNR efforts through the Philadelphia Community Cats Program supported by Best Friends & PetSmart Charities.

Live release rate is the highest it's ever been.

18,273 animals exited through adoptions, returns to owner, transfers, and releases.

76%

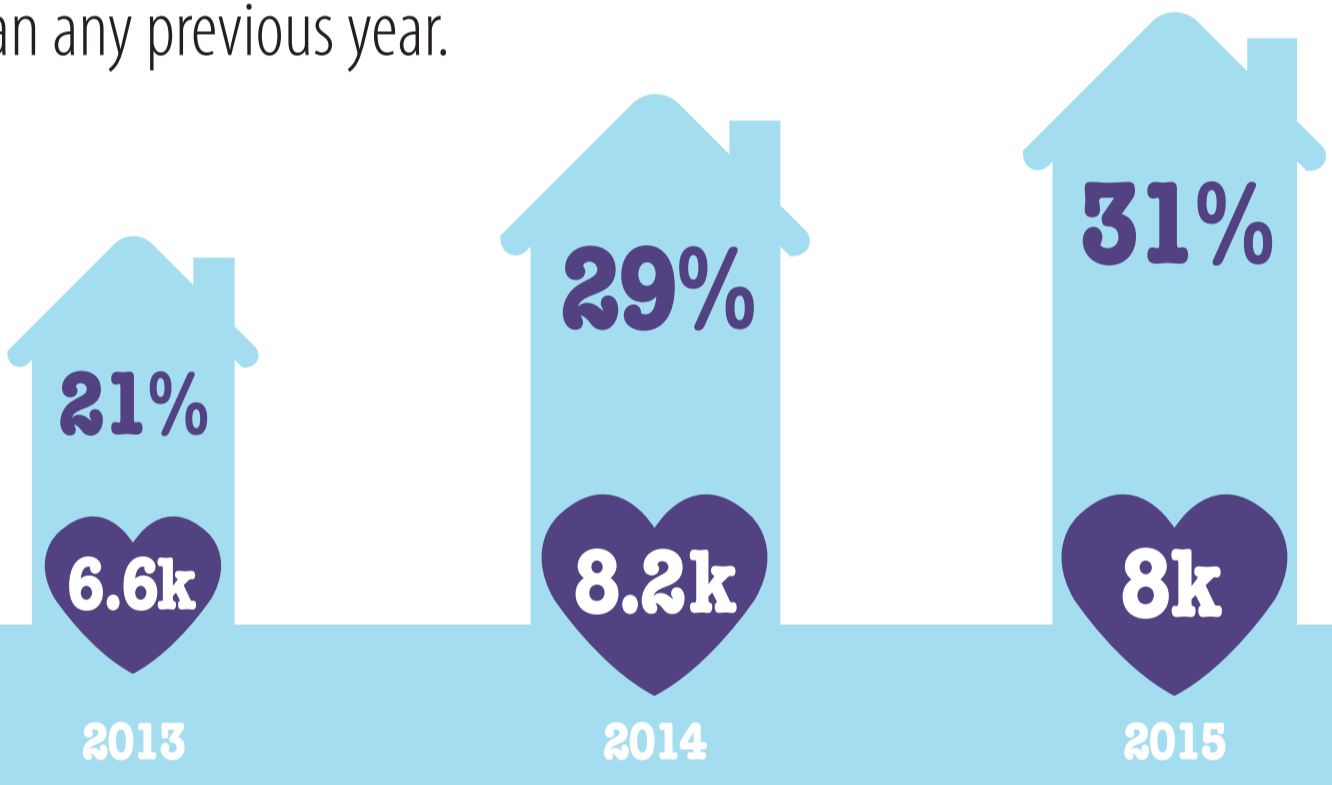
14% INCREASE FROM 2012

The Live Release Rate does not include animals that died or were lost in care, or the 1,944 animals that were dead on arrival.

Pets that came into ACCT Philly in 2015 had a **better chance of being adopted** than any previous year.

♥ NUMBER OF ADOPTIONS

🏠 PERCENT OF INTAKE

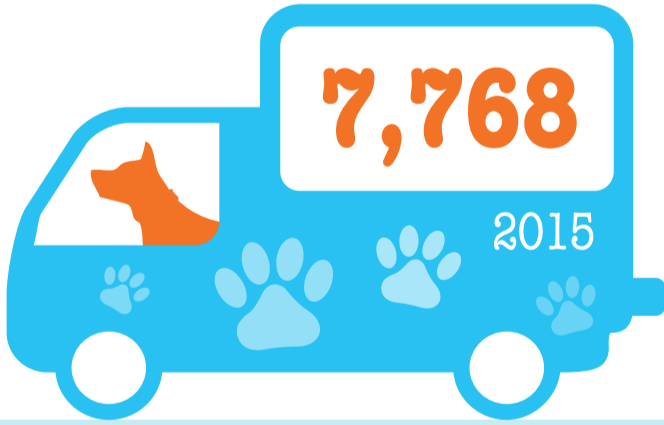


High adoption numbers year after year fill our communities with vaccinated, spayed and neutered pets that cannot contribute to the pet population, in-turn decreasing

shelter intake and euthanasia. Thanks to support from **Petco Foundation**, more pets are finding homes through offsite adoption events.

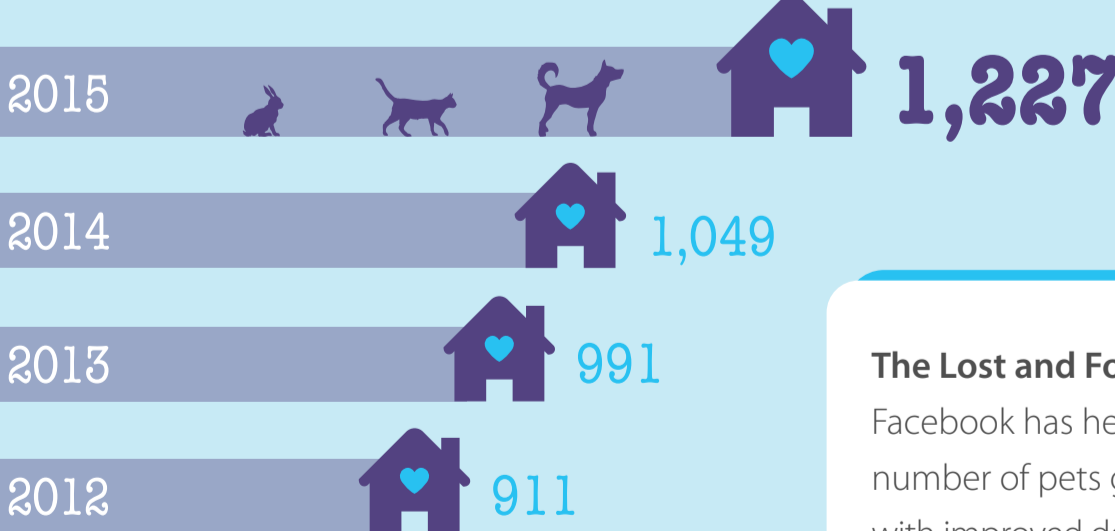
Transferred (rescue partners)

Top 3 rescues (by pull volume)



- PAWS**
- Two By Two Rescue**
- Last Chance Ranch**

Pets returned to their owner



The **Lost and Found Pets Page** on Facebook has helped us increase the number of pets going home, along with improved dog license compliance.

Pets utilizing foster care

3,440

Spay or neuter surgeries

8,420

Thank you to our generous partners for helping us save lives every day!

