

Animal Care & Control Team of Philadelphia

2014 Shelter Statistics - All Animals

	Jan	Feb	Mar	Apr	May	Jun	Jul	Aug	Sept	Oct	Nov	Dec	Total
Intake	1,618	1,349	1,879	2,187	2,814	-	-	-	-	-	-	-	9,847
Stray	937	753	1,197	1,443	1,918								6,248
Surrendered by Owner	672	591	674	744	889								3,570
Transferred In	9	5	8	-	7								29
Live Release	1,286	1,132	1,387	1,495	1,750	-	-	-	-	-	-	-	7,050
Adopted	601	514	544	527	513								2,699
Returned to Owner	64	64	93	83	112								416
Transferred to Rescue	549	496	676	792	989								3,502
Released	72	58	74	93	136								433
Total Euthanized	388	291	325	450	513	-	-	-	-	-	-	-	1,967
Owner Intended Euthanasia	33	49	52	49	69								252
All Other Euthanasia	355	242	273	401	444								1,715
Died	21	14	24	71	44								174
Missing	1	5	6	5	17								34

Live Release Rate	77%	80%	81%	77%	77%								78%
-------------------	-----	-----	-----	-----	-----	--	--	--	--	--	--	--	-----

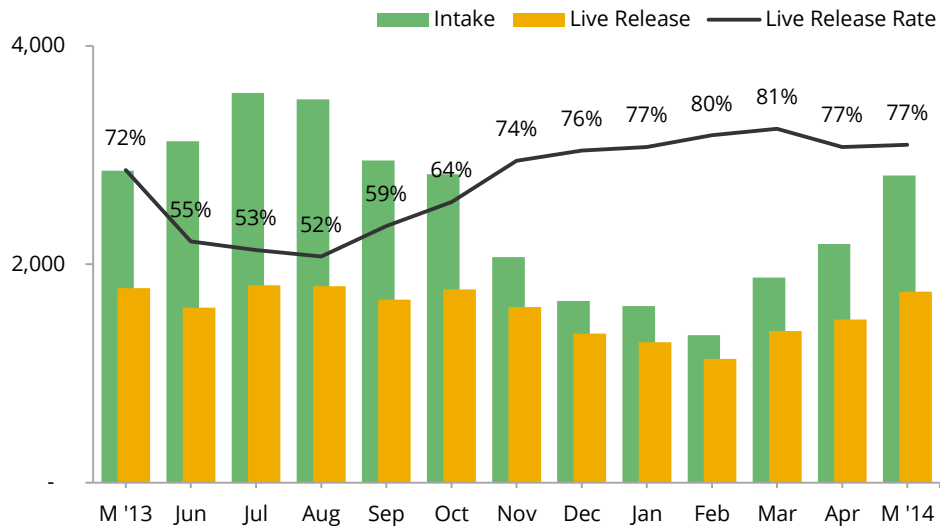
Live Release Rate = Live Release / (Live Release + Total Euthanized)

Adjusted Live Release Rate	78%	82%	84%	79%	80%								80%
----------------------------	-----	-----	-----	-----	-----	--	--	--	--	--	--	--	-----

Adjusted Live Release Rate = Live Release / (Live Release + (Total Euthanized - Owner Intended Euthanasia))

The May Live Release Rate does not include 61 animals that died or were lost in care, or 173 animals that were dead on arrival.

Month End Animal Count	1,019	922	1,057	1,223	1,714								n/a
Placed in Foster Care	146	130	233	366	476								1,351
Spay/Neuter Surgeries	634	585	658	709	672								3,258



Animal Care & Control Team of Philadelphia

2014 Shelter Statistics - Dogs

	Jan	Feb	Mar	Apr	May	Jun	Jul	Aug	Sept	Oct	Nov	Dec	Total
Intake	674	591	686	677	726	-	-	-	-	-	-	-	3,354
Stray	344	301	397	337	379								1,758
Surrendered by Owner	326	288	286	340	344								1,584
Transferred In	4	2	3	-	3								12
Live Release	440	455	492	503	555	-	-	-	-	-	-	-	2,445
Adopted	122	123	126	116	80								567
Returned to Owner	50	55	75	68	96								344
Transferred to Rescue	268	277	291	319	379								1,534
Released	n/a	n/a	n/a	n/a	n/a	n/a	n/a	n/a	n/a	n/a	n/a	n/a	n/a
Total Euthanized	223	152	161	199	157	-	-	-	-	-	-	-	892
Owner Intended Euthanasia	19	27	30	24	31								131
All Other Euthanasia	204	125	131	175	126								761
Died	1	5	1	4	-								11
Missing	-	-	3	1	-								4

Live Release Rate	66%	75%	75%	72%	78%								73%
--------------------------	-----	-----	-----	-----	-----	--	--	--	--	--	--	--	-----

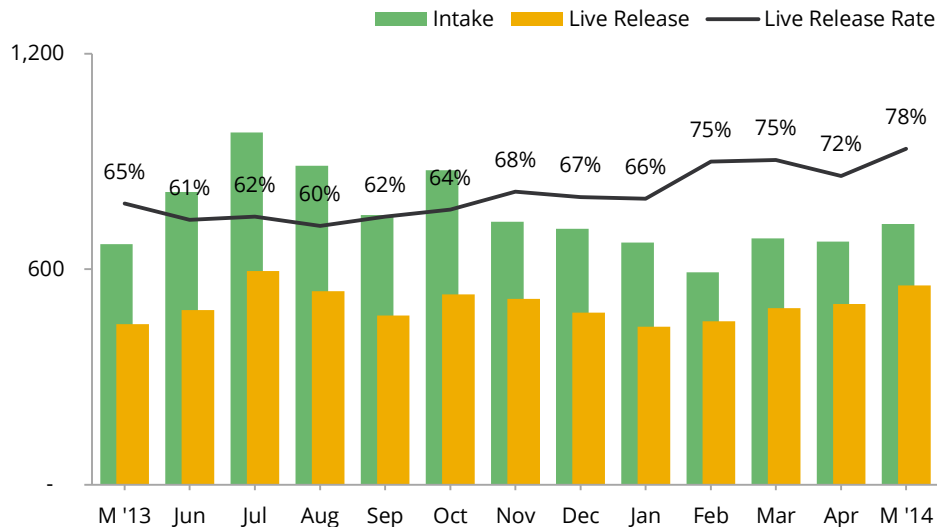
Live Release Rate = Live Release / (Live Release + Total Euthanized)

Adjusted Live Release Rate	68%	78%	79%	74%	81%								76%
-----------------------------------	-----	-----	-----	-----	-----	--	--	--	--	--	--	--	-----

Adjusted Live Release Rate = Live Release / (Live Release + (Total Euthanized - Owner Intended Euthanasia))

The May Live Release Rate does not include 0 animals that died or were lost in care, or 60 animals that were dead on arrival.

Month End Animal Count	220	199	228	199	214								n/a
Placed in Foster Care	35	31	19	13	27								125
Spay/Neuter Surgeries	170	184	166	162	148								830



Animal Care & Control Team of Philadelphia

2014 Shelter Statistics - Cats

	Jan	Feb	Mar	Apr	May	Jun	Jul	Aug	Sept	Oct	Nov	Dec	Total
Intake	855	677	1,112	1,370	1,755	-	-	-	-	-	-	-	5,769
Stray	556	403	738	993	1,301								3,991
Surrendered by Owner	294	271	369	377	450								1,761
Transferred In	5	3	5	-	4								17
Live Release	777	628	844	913	958	-	-	-	-	-	-	-	4,120
Adopted	477	386	403	392	428								2,086
Returned to Owner	14	9	18	15	15								71
Transferred to Rescue	223	187	367	430	421								1,628
Released	63	46	56	76	94								335
Total Euthanized	148	113	141	197	293	-	-	-	-	-	-	-	892
Owner Intended Euthanasia	14	22	21	25	38								120
All Other Euthanasia	134	91	120	172	255								772
Died	20	9	19	66	40								154
Missing	1	5	2	3	6								17

Live Release Rate	84%	85%	86%	82%	77%								82%
--------------------------	-----	-----	-----	-----	-----	--	--	--	--	--	--	--	-----

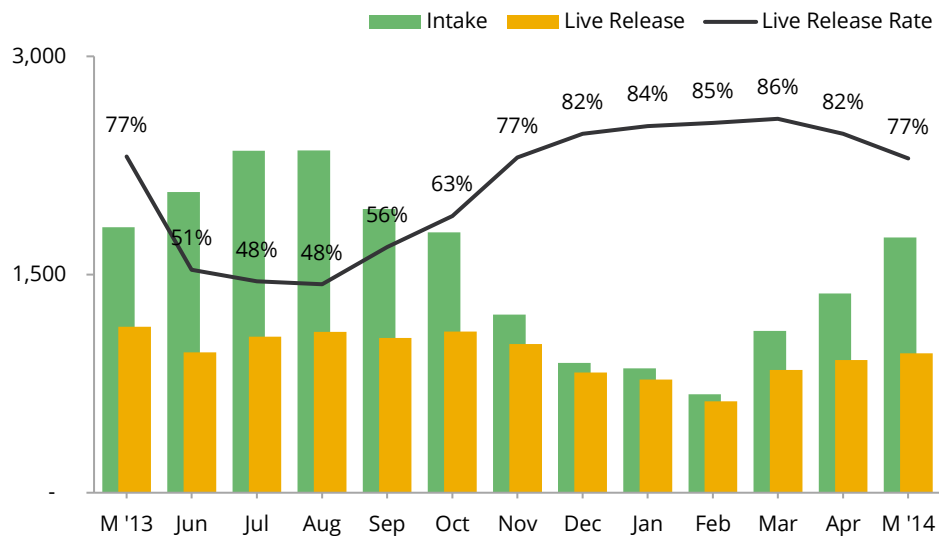
Live Release Rate = Live Release / (Live Release + Total Euthanized)

Adjusted Live Release Rate	85%	87%	88%	84%	79%								84%
-----------------------------------	-----	-----	-----	-----	-----	--	--	--	--	--	--	--	-----

Adjusted Live Release Rate = Live Release / (Live Release + (Total Euthanized - Owner Intended Euthanasia))

The May Live Release Rate does not include 46 animals that died or were lost in care, or 78 animals that were dead on arrival.

Month End Animal Count	782	700	804	994	1,451								n/a
Placed in Foster Care	111	99	208	351	449								1,218
Spay/Neuter Surgeries	464	401	487	546	523								2,421



Animal Care & Control Team of Philadelphia

2014 Shelter Statistics - Small Animals & Wildlife

	Jan	Feb	Mar	Apr	May	Jun	Jul	Aug	Sept	Oct	Nov	Dec	Total
Intake	89	81	81	140	333	-	-	-	-	-	-	-	724
Stray or Wildlife	37	49	62	113	238								499
Surrendered by Owner	52	32	19	27	95								225
Transferred In	-	-	-	-	-								-
Live Release	69	49	51	79	237	-	-	-	-	-	-	-	485
Adopted	2	5	15	19	5								46
Returned to Owner	-	-	-	-	1								1
Transferred to Rescue	58	32	18	43	189								340
Released	9	12	18	17	42								98
Total Euthanized	17	26	23	54	63	-	-	-	-	-	-	-	183
Owner Intended Euthanasia	-	-	1	-	-								1
All Other Euthanasia	17	26	22	54	63								182
Died	-	-	4	1	4								9
Missing	-	-	1	1	11								13

Live Release Rate	80%	65%	69%	59%	79%								73%
--------------------------	-----	-----	-----	-----	-----	--	--	--	--	--	--	--	-----

Live Release Rate = Live Release / (Live Release + Total Euthanized)

Adjusted Live Release Rate	80%	65%	70%	59%	79%								73%
-----------------------------------	-----	-----	-----	-----	-----	--	--	--	--	--	--	--	-----

Adjusted Live Release Rate = Live Release / (Live Release + (Total Euthanized - Owner Intended Euthanasia))

The May Live Release Rate does not include 15 animals that died or were lost in care, or 35 animals that were dead on arrival.

Month End Animal Count	17	23	25	30	49								n/a
Placed in Foster Care	-	-	6	2	-								8
Spay/Neuter Surgeries	-	-	5	1	1								7

