

Animal Care and Control Team of Philadelphia

2013 Animal Care Statistics

All Animals

	Jan	Feb	Mar	Apr	May	Jun	Jul	Aug	Sept	Oct	Nov	Dec	YTD
Intake	1,844	1,778	2,013	2,525	2,856	3,127	3,569	3,512	2,952	2,825	2,066		29,067
Stray	1,050	1,063	1,134	1,662	2,061	2,174	2,510	2,478	1,996	1,892	1,350		19,370
Owner Surrendered	705	633	792	787	698	860	963	931	858	828	625		8,680
Returned Adoption	73	67	69	62	67	83	73	83	79	75	78		809
Transferred In	16	15	18	14	30	10	23	20	19	30	13		208
Live Release	1,455	1,434	1,500	1,680	1,781	1,602	1,808	1,800	1,677	1,769	1,607		18,113
Adopted	508	433	400	359	409	542	672	634	640	663	686		5,946
Returned to Owner	86	77	81	86	85	97	86	76	65	93	89		921
Transferred/Released	861	924	1,019	1,235	1,287	963	1,050	1,090	972	1,013	832		11,246
Euthanized	475	407	502	536	708	1,299	1,586	1,674	1,178	986	573		9,924
Died or Lost in Care	49	27	24	35	77	104	126	110	91	105	28		776
Died	40	20	23	28	47	70	90	68	71	73	23		553
Missing	9	7	1	7	30	34	36	42	20	32	5		223

Dogs

	Jan	Feb	Mar	Apr	May	Jun	Jul	Aug	Sept	Oct	Nov	Dec	YTD
Intake	822	734	767	739	670	815	981	888	751	876	732		8,775
Stray	429	370	367	379	390	442	557	477	392	466	405		4,674
Owner Surrendered	353	332	370	335	254	335	389	380	326	374	289		3,737
Returned Adoption	28	28	25	22	21	35	25	25	28	23	27		287
Transferred In	12	4	5	3	5	3	10	6	5	13	11		77
Live Release	535	522	487	469	447	486	595	539	471	530	517		5,598
Adopted	153	137	129	114	109	126	150	135	152	167	157		1,529
Returned to Owner	78	69	74	68	69	84	78	63	49	82	69		783
Transferred/Released	304	316	284	287	269	276	367	341	270	281	291		3,286
Euthanized	274	214	284	246	238	305	362	359	286	300	243		3,111
Died or Lost in Care	4	5	4	4	2	8	10	8	9	4	2		60
Died	3	5	4	4	2	7	9	3	5	4	1		47
Missing	1	-	-	-	-	1	1	5	4	-	1		13

Animal Care and Control Team of Philadelphia

2013 Animal Care Statistics

Cats

	Jan	Feb	Mar	Apr	May	Jun	Jul	Aug	Sept	Oct	Nov	Dec	YTD
Intake	916	942	1,125	1,577	1,826	2,068	2,350	2,353	1,950	1,790	1,224		18,121
Stray	539	616	670	1,106	1,386	1,544	1,741	1,762	1,396	1,295	860		12,915
Owner Surrendered	328	278	398	420	391	469	548	521	495	426	312		4,586
Returned Adoption	45	39	44	40	44	48	48	58	51	52	51		520
Transferred In	4	9	13	11	5	7	13	12	8	17	1		100
Live Release	863	854	940	1,080	1,141	964	1,073	1,106	1,065	1,107	1,022		11,215
Adopted	351	294	269	240	288	410	517	495	479	491	528		4,362
Returned to Owner	7	8	7	18	16	13	8	13	15	11	18		134
Transferred/Released	505	552	664	822	837	541	548	598	571	605	476		6,719
Euthanized	158	151	172	227	340	924	1,143	1,209	827	639	308		6,098
Died or Lost in Care	43	19	15	27	48	79	99	85	68	75	22		580
Died	35	12	14	23	41	61	75	64	62	66	20		473
Missing	8	7	1	4	7	18	24	21	6	9	2		107

Small Animals & Wildlife

	Jan	Feb	Mar	Apr	May	Jun	Jul	Aug	Sept	Oct	Nov	Dec	YTD
Intake	106	102	121	209	360	244	238	271	251	159	110		2,171
Stray or Wildlife	82	77	97	177	285	188	212	239	208	131	85		1,781
Owner Surrendered	24	23	24	32	53	56	26	30	37	28	24		357
Returned Adoption	-	-	-	-	2	-	-	-	-	-	-		2
Transferred In	-	2	-	-	20	-	-	2	6	-	1		31
Live Release	57	58	73	131	193	152	140	155	141	132	68		1,300
Adopted	4	2	2	5	12	6	5	4	9	5	1		55
Returned to Owner	1	-	-	-	-	-	-	-	1	-	2		4
Transferred/Released	52	56	71	126	181	146	135	151	131	127	65		1,241
Euthanized	43	42	46	63	130	70	81	106	65	47	22		715
Died or Lost in Care	2	3	5	4	27	17	17	17	14	26	4		136
Died	2	3	5	1	4	2	6	1	4	3	2		33
Missing	-	-	-	3	23	15	11	16	10	23	2		103

Animal Care and Control Team of Philadelphia

2013 Animal Care Statistics

Live Release Rate	Jan	Feb	Mar	Apr	May	Jun	Jul	Aug	Sept	Oct	Nov	Dec	YTD
Total	75%	78%	75%	76%	72%	55%	53%	52%	59%	64%	74%		65%
Dogs	66%	71%	63%	66%	65%	61%	62%	60%	62%	64%	68%		64%
Cats	85%	85%	85%	83%	77%	51%	48%	48%	56%	63%	77%		65%
Sm. Animals & Wildlife	57%	58%	61%	68%	60%	68%	63%	59%	68%	74%	76%		65%

Live Release Rate = Live Release / (Live Release + Euthanized) * 100%; see asilomaraccords.org for further information.

The Live Release Rate does not include animals that died or were lost in care, or animals that were dead on arrival.

Spay/Neuter

Surgeries	Jan	Feb	Mar	Apr	May	Jun	Jul	Aug	Sept	Oct	Nov	Dec	YTD
Total	582	507	493	564	576	688	800	729	678	769	752		7,138
Dogs	199	172	166	155	144	153	146	143	183	219	167		1,847
Cats	383	333	327	408	432	535	654	585	495	550	585		5,287
Sm. Animals & Wildlife	-	2	-	1	-	-	-	1	-	-	-		4

Placed in Foster Care

	Jan	Feb	Mar	Apr	May	Jun	Jul	Aug	Sept	Oct	Nov	Dec	YTD
Total	152	84	113	292	371	382	383	330	289	318	229		2,943
Dogs	48	27	28	29	36	31	33	29	39	54	25		379
Cats	102	56	84	263	335	350	350	300	250	264	204		2,558
Sm. Animals & Wildlife	2	1	1	-	-	1	-	1	-	-	-		6

Month End Animal

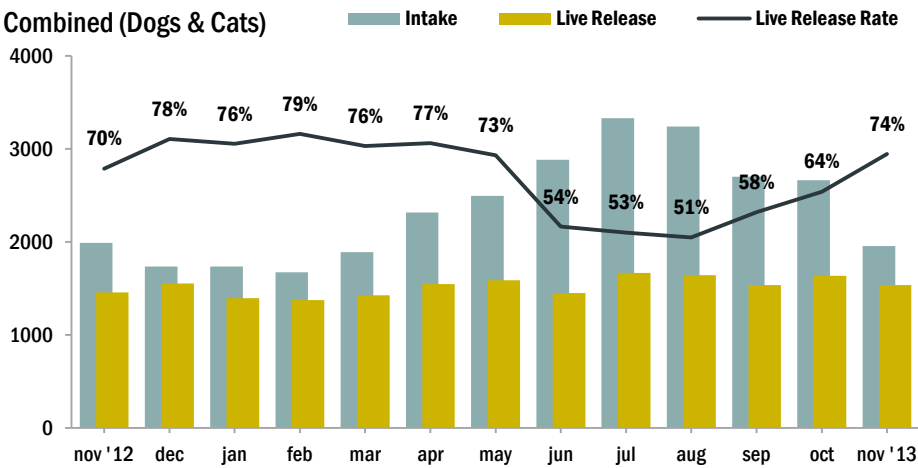
Count	Jan	Feb	Mar	Apr	May	Jun	Jul	Aug	Sept	Oct	Nov	Dec	YTD
Total	832	742	730	1,005	1,298	1,418	1,478	1,411	1,417	1,389	1,247		n/a
Dogs	219	211	203	223	206	220	237	220	204	248	217		n/a
Cats	600	519	518	762	1,061	1,162	1,205	1,162	1,153	1,127	1,000		n/a
Sm. Animals & Wildlife	13	12	9	20	31	36	36	29	60	14	30		n/a

Animal Care and Control Team of Philadelphia

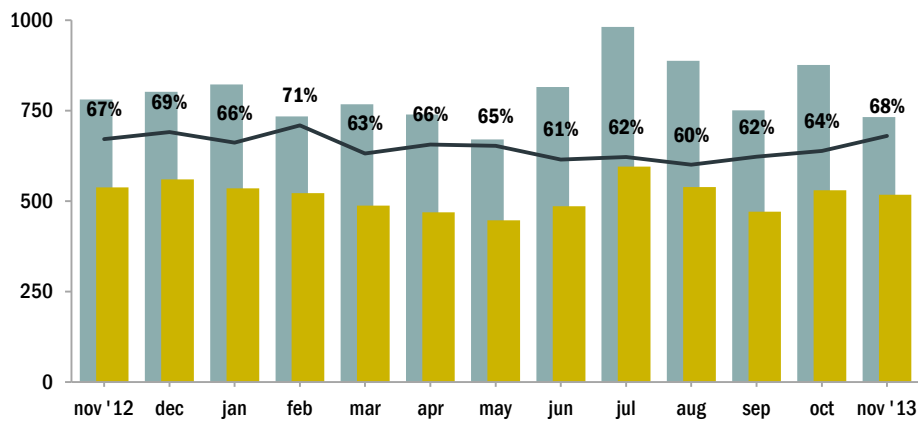
2013 Animal Care Statistics

Intake & Live Release

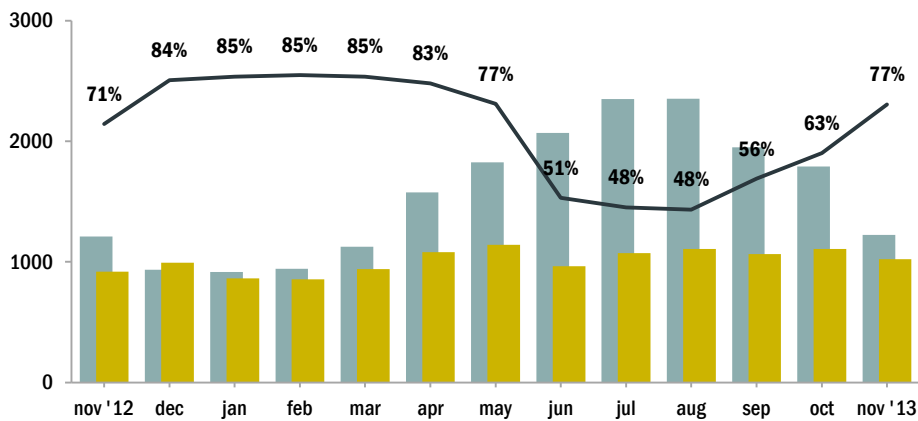
Combined (Dogs & Cats)



Dogs



Cats



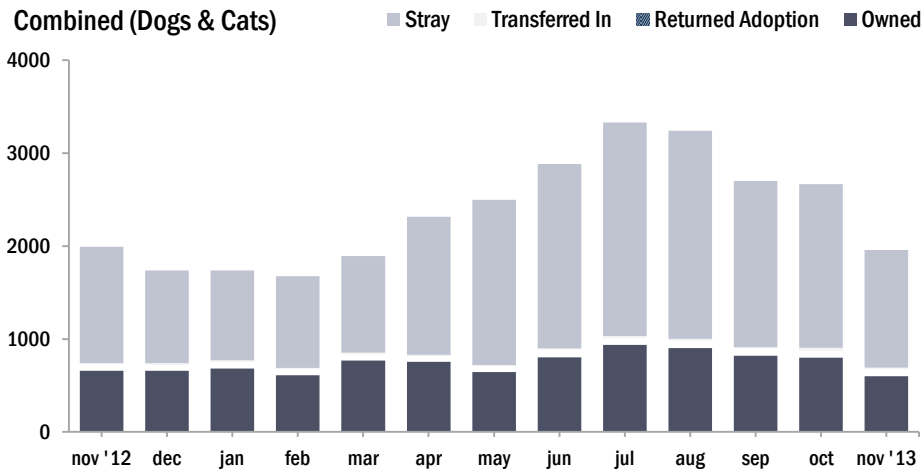
NOTES:

Live Release Rate, as dictated by the Asilomar Accords, the industry standard (see: asilomaraccords.org), is calculated by dividing Total Live Release (adoptions, transfers to partner organizations, and returns to owner) by Total Outcomes (adoptions, outgoing transfers, returns to owner, and euthanasias).

The Live Release Rate does not include animals that died or were lost in care, animals that were dead on arrival, or administrative transfers.

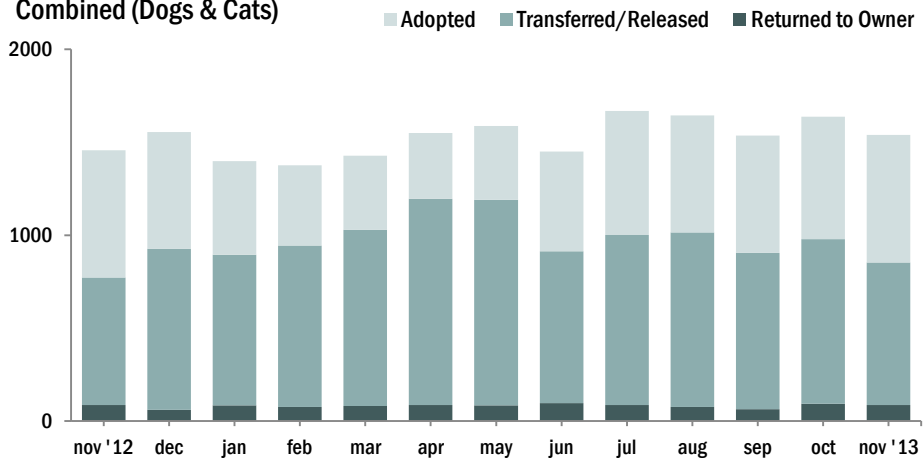
Source of Intake

Combined (Dogs & Cats)

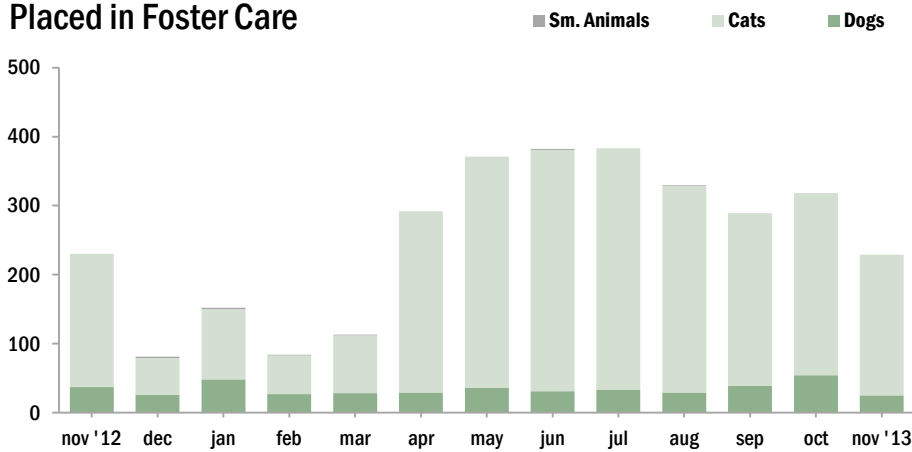


Live Releases

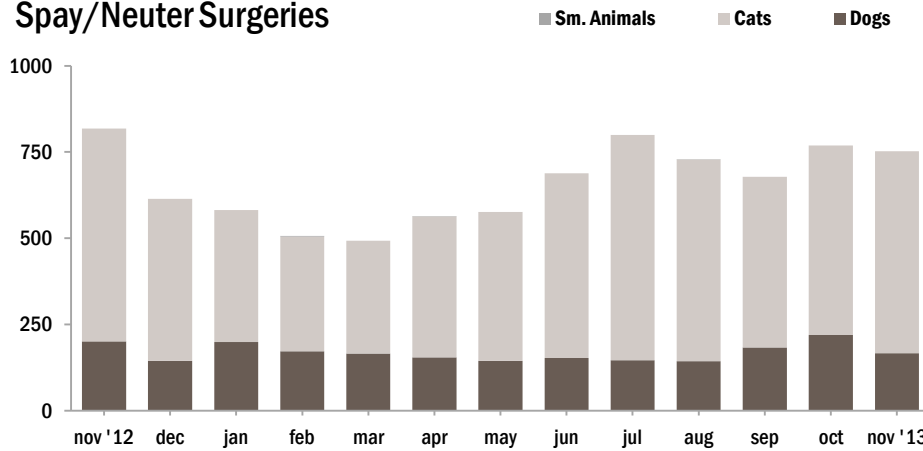
Combined (Dogs & Cats)



Placed in Foster Care



Spay/Neuter Surgeries



The Foster Care Program is one of the many life saving arms of ACCT Philly. The primary reason for foster care is to provide a temporary home for a potentially adoptable animal whose current condition is not manageable in a shelter setting and to alleviate overcrowding. ACCT Philly receives more animals than there is space, and so moving animals into foster homes not only saves them, but also ensures that newly arriving animals have cage space.