

Animal Care and Control Team of Philadelphia

2013 Animal Care Statistics

All Animals	Jan	Feb	Mar	Apr	May	Jun	Jul	Aug	Sept	Oct	Nov	Dec	YTD
Intake	1,844	1,778	2,013	2,525	2,856	3,127	3,569	3,512					21,224
Stray	1,050	1,063	1,134	1,662	2,061	2,174	2,510	2,478					14,132
Owner Surrendered	705	633	792	787	698	860	963	931					6,369
Returned Adoption	73	67	69	62	67	83	73	83					577
Transferred In	16	15	18	14	30	10	23	20					146
Live Release	1,455	1,434	1,500	1,680	1,781	1,602	1,808	1,800					13,060
Adopted	508	433	400	359	409	542	672	634					3,957
Returned to Owner	86	77	81	86	85	97	86	76					674
Transferred to Rescue	861	924	1,019	1,235	1,287	963	1,050	1,090					8,429
Euthanized	475	407	502	536	708	1,299	1,586	1,674					7,187
Died or Lost in Care	49	27	24	35	77	104	126	110					552
Died	40	20	23	28	47	70	90	68					386
Missing	9	7	1	7	30	34	36	42					166

Dogs	Jan	Feb	Mar	Apr	May	Jun	Jul	Aug	Sept	Oct	Nov	Dec	YTD
Intake	822	734	767	739	670	815	981	888					6,416
Stray	429	370	367	379	390	442	557	477					3,411
Owner Surrendered	353	332	370	335	254	335	389	380					2,748
Returned Adoption	28	28	25	22	21	35	25	25					209
Transferred In	12	4	5	3	5	3	10	6					48
Live Release	535	522	487	469	447	486	595	539					4,080
Adopted	153	137	129	114	109	126	150	135					1,053
Returned to Owner	78	69	74	68	69	84	78	63					583
Transferred to Rescue	304	316	284	287	269	276	367	341					2,444
Euthanized	274	214	284	246	238	305	362	359					2,282
Died or Lost in Care	4	5	4	4	2	8	10	8					45
Died	3	5	4	4	2	7	9	3					37
Missing	1	-	-	-	-	1	1	5					8

Animal Care and Control Team of Philadelphia

2013 Animal Care Statistics

Cats

	Jan	Feb	Mar	Apr	May	Jun	Jul	Aug	Sept	Oct	Nov	Dec	YTD
Intake	916	942	1,125	1,577	1,826	2,068	2,350	2,353					13,157
Stray	539	616	670	1,106	1,386	1,544	1,741	1,762					9,364
Owner Surrendered	328	278	398	420	391	469	548	521					3,353
Returned Adoption	45	39	44	40	44	48	48	58					366
Transferred In	4	9	13	11	5	7	13	12					74
Live Release	863	854	940	1,080	1,141	964	1,073	1,106					8,021
Adopted	351	294	269	240	288	410	517	495					2,864
Returned to Owner	7	8	7	18	16	13	8	13					90
Transferred to Rescue	505	552	664	822	837	541	548	598					5,067
Euthanized	158	151	172	227	340	924	1,143	1,209					4,324
Died or Lost in Care	43	19	15	27	48	79	99	85					415
Died	35	12	14	23	41	61	75	64					325
Missing	8	7	1	4	7	18	24	21					90

Small Animals & Wildlife

	Jan	Feb	Mar	Apr	May	Jun	Jul	Aug	Sept	Oct	Nov	Dec	YTD
Intake	106	102	121	209	360	244	238	271					1,651
Stray or Wildlife	82	77	97	177	285	188	212	239					1,357
Owner Surrendered	24	23	24	32	53	56	26	30					268
Returned Adoption	-	-	-	-	2	-	-	-					2
Transferred In	-	2	-	-	20	-	-	2					24
Live Release	57	58	73	131	193	152	140	155					959
Adopted	4	2	2	5	12	6	5	4					40
Returned to Owner	1	-	-	-	-	-	-	-					1
Transferred or Released	52	56	71	126	181	146	135	151					918
Euthanized	43	42	46	63	130	70	81	106					581
Died or Lost in Care	2	3	5	4	27	17	17	17					92
Died	2	3	5	1	4	2	6	1					24
Missing	-	-	-	3	23	15	11	16					68

Animal Care and Control Team of Philadelphia

2013 Animal Care Statistics

Live Release Rate	Jan	Feb	Mar	Apr	May	Jun	Jul	Aug	Sept	Oct	Nov	Dec	YTD
Total	75%	78%	75%	76%	72%	55%	53%	52%					65%
Dogs	66%	71%	63%	66%	65%	61%	62%	60%					64%
Cats	85%	85%	85%	83%	77%	51%	48%	48%					65%
Sm. Animals & Wildlife	57%	58%	61%	68%	60%	68%	63%	59%					62%

Live Release Rate = Live Release / (Live Release + Euthanized) * 100%; see asilomaraccords.org for further information.

The Live Release Rate does not include animals that died or were lost in care, or animals that were dead on arrival.

Spay/Neuter

Surgeries	Jan	Feb	Mar	Apr	May	Jun	Jul	Aug	Sept	Oct	Nov	Dec	YTD
Total	582	507	493	564	576	688	800	729					4,939
Dogs	199	172	166	155	144	153	146	143					1,278
Cats	383	333	327	408	432	535	654	585					3,657
Sm. Animals & Wildlife	-	2	-	1	-	-	-	1					4

Placed in Foster Care

	Jan	Feb	Mar	Apr	May	Jun	Jul	Aug	Sept	Oct	Nov	Dec	YTD
Total	152	84	113	292	371	382	383	330					2,107
Dogs	48	27	28	29	36	31	33	29					261
Cats	102	56	84	263	335	350	350	300					1,840
Sm. Animals & Wildlife	2	1	1	-	-	1	-	1					6

Month End Animal

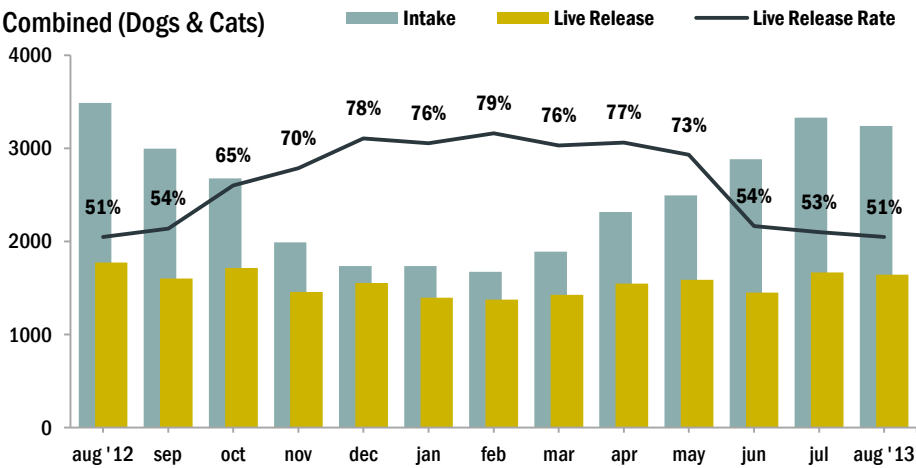
Count	Jan	Feb	Mar	Apr	May	Jun	Jul	Aug	Sept	Oct	Nov	Dec	YTD
Total	832	742	730	1,005	1,298	1,418	1,478	1,411					n/a
Dogs	219	211	203	223	206	220	237	220					n/a
Cats	600	519	518	762	1,061	1,162	1,205	1,162					n/a
Sm. Animals & Wildlife	13	12	9	20	31	36	36	29					n/a

Animal Care and Control Team of Philadelphia

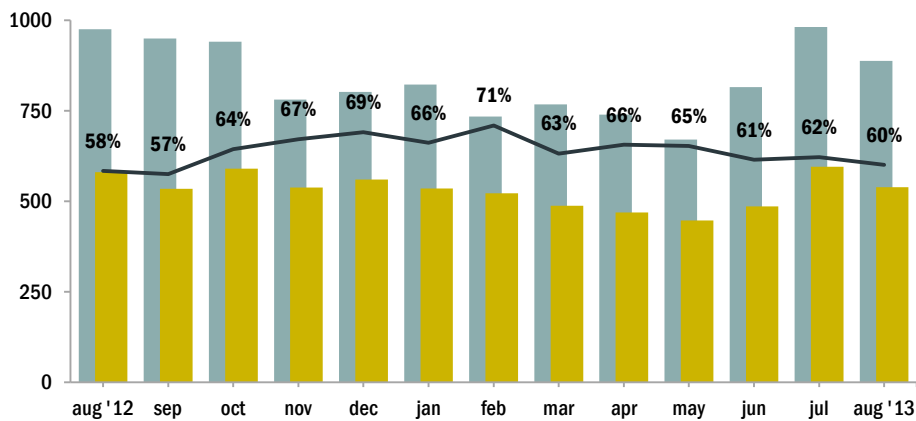
2013 Animal Care Statistics

Intake & Live Release

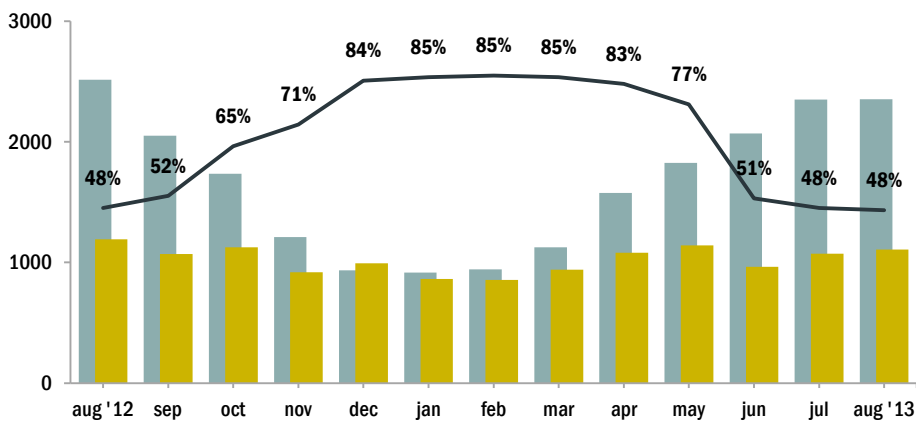
Combined (Dogs & Cats)



Dogs



Cats



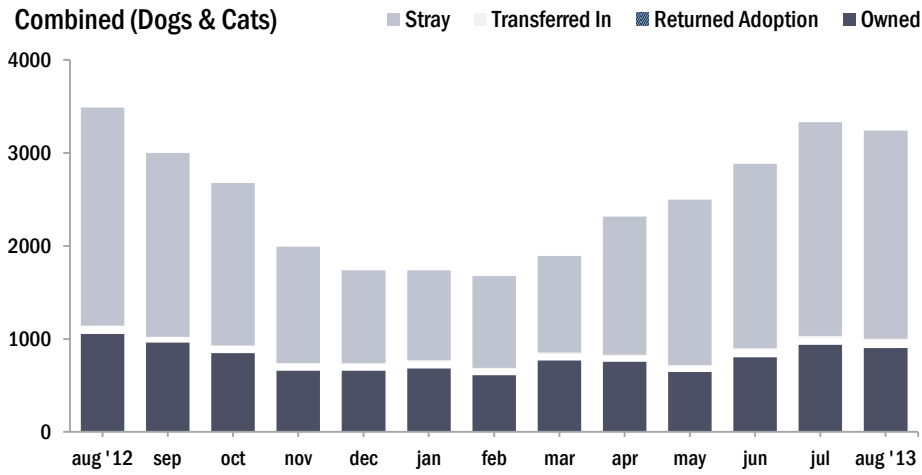
NOTES:

Live Release Rate, as dictated by the Asilomar Accords, the industry standard (see: asilomaraccords.org), is calculated by dividing Total Live Release (adoptions, transfers to partner organizations, and returns to owner) by Total Outcomes (adoptions, outgoing transfers, returns to owner, and euthanasias).

The Live Release Rate does not include animals that died or were lost in care, animals that were dead on arrival, or administrative transfers.

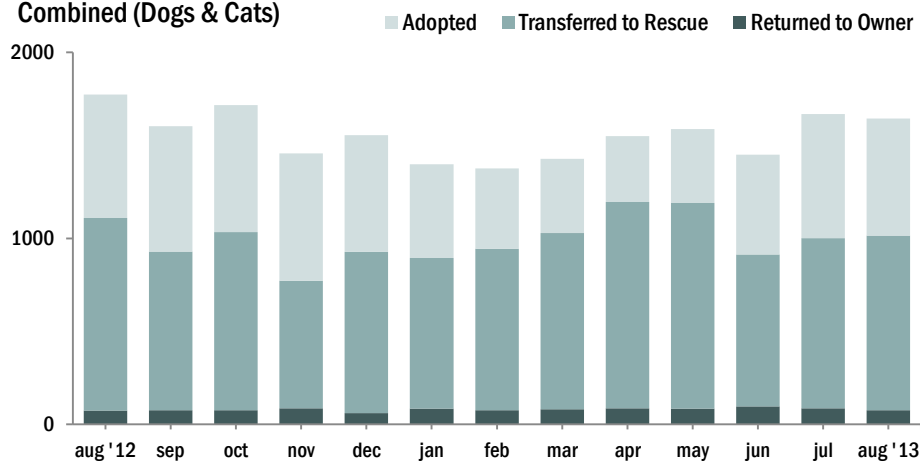
Source of Intake

Combined (Dogs & Cats)

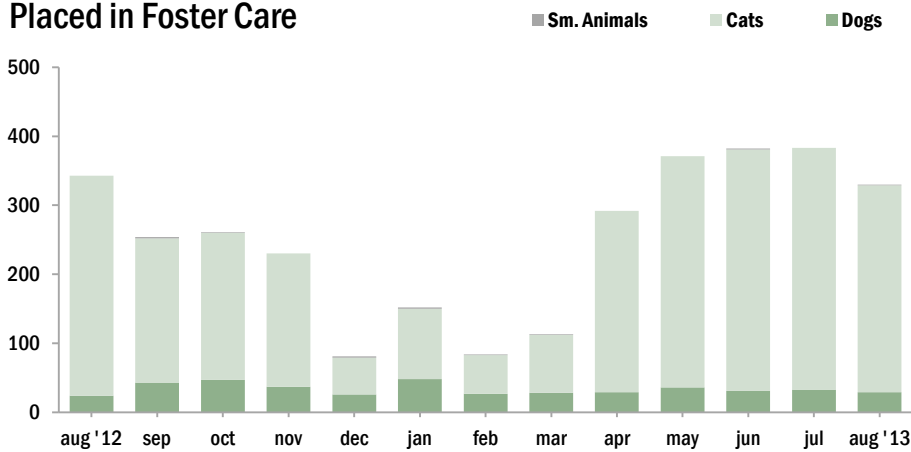


Live Releases

Combined (Dogs & Cats)



Placed in Foster Care



The Foster Care Program is one of the many life saving arms of ACCT Philly. The primary reason for foster care is to provide a temporary home for a potentially adoptable animal whose current condition is not manageable in a shelter setting and to alleviate overcrowding. ACCT Philly receives more animals than there is space, and so moving animals into foster homes not only saves them, but also ensures that newly arriving animals have cage space.

Spay/Neuter Surgeries

