

Animal Care and Control Team of Philadelphia

2013 Animal Care Statistics

All Animals

	Jan	Feb	Mar	Apr	May	Jun	Jul	Aug	Sept	Oct	Nov	Dec	YTD
Intake	1,844	1,778	2,013	2,525	2,856	3,127	3,569						17,712
Stray	1,050	1,063	1,134	1,662	2,061	2,174	2,510						11,654
Owner Surrendered	705	633	792	787	698	860	963						5,438
Returned Adoption	73	67	69	62	67	83	73						494
Transferred In	16	15	18	14	30	10	23						126
Live Release	1,455	1,434	1,500	1,680	1,781	1,602	1,808						11,260
Adopted	508	433	400	359	409	542	672						3,323
Returned to Owner	86	77	81	86	85	97	86						598
Transferred to Rescue	861	924	1,019	1,235	1,287	963	1,050						7,339
Euthanized	475	407	502	536	708	1,299	1,586						5,513
Died or Lost in Care	49	27	24	35	77	104	126						442
Died	40	20	23	28	47	70	90						318
Missing	9	7	1	7	30	34	36						124

Dogs

	Jan	Feb	Mar	Apr	May	Jun	Jul	Aug	Sept	Oct	Nov	Dec	YTD
Intake	822	734	767	739	670	815	981						5,528
Stray	429	370	367	379	390	442	557						2,934
Owner Surrendered	353	332	370	335	254	335	389						2,368
Returned Adoption	28	28	25	22	21	35	25						184
Transferred In	12	4	5	3	5	3	10						42
Live Release	535	522	487	469	447	486	595						3,541
Adopted	153	137	129	114	109	126	150						918
Returned to Owner	78	69	74	68	69	84	78						520
Transferred to Rescue	304	316	284	287	269	276	367						2,103
Euthanized	274	214	284	246	238	305	362						1,923
Died or Lost in Care	4	5	4	4	2	8	10						37
Died	3	5	4	4	2	7	9						34
Missing	1	-	-	-	-	1	1						3

Animal Care and Control Team of Philadelphia

2013 Animal Care Statistics

Cats

	Jan	Feb	Mar	Apr	May	Jun	Jul	Aug	Sept	Oct	Nov	Dec	YTD
Intake	916	942	1,125	1,577	1,826	2,068	2,350						10,804
Stray	539	616	670	1,106	1,386	1,544	1,741						7,602
Owner Surrendered	328	278	398	420	391	469	548						2,832
Returned Adoption	45	39	44	40	44	48	48						308
Transferred In	4	9	13	11	5	7	13						62
Live Release	863	854	940	1,080	1,141	964	1,073						6,915
Adopted	351	294	269	240	288	410	517						2,369
Returned to Owner	7	8	7	18	16	13	8						77
Transferred to Rescue	505	552	664	822	837	541	548						4,469
Euthanized	158	151	172	227	340	924	1,143						3,115
Died or Lost in Care	43	19	15	27	48	79	99						330
Died	35	12	14	23	41	61	75						261
Missing	8	7	1	4	7	18	24						69

Small Animals & Wildlife

	Jan	Feb	Mar	Apr	May	Jun	Jul	Aug	Sept	Oct	Nov	Dec	YTD
Intake	106	102	121	209	360	244	238						1,380
Stray or Wildlife	82	77	97	177	285	188	212						1,118
Owner Surrendered	24	23	24	32	53	56	26						238
Returned Adoption	-	-	-	-	2	-	-						2
Transferred In	-	2	-	-	20	-	-						22
Live Release	57	58	73	131	193	152	140						804
Adopted	4	2	2	5	12	6	5						36
Returned to Owner	1	-	-	-	-	-	-						1
Transferred or Released	52	56	71	126	181	146	135						767
Euthanized	43	42	46	63	130	70	81						475
Died or Lost in Care	2	3	5	4	27	17	17						75
Died	2	3	5	1	4	2	6						23
Missing	-	-	-	3	23	15	11						52

Animal Care and Control Team of Philadelphia

2013 Animal Care Statistics

Live Release Rate	Jan	Feb	Mar	Apr	May	Jun	Jul	Aug	Sept	Oct	Nov	Dec	YTD
Total	75%	78%	75%	76%	72%	55%	53%						67%
Dogs	66%	71%	63%	66%	65%	61%	62%						65%
Cats	85%	85%	85%	83%	77%	51%	48%						69%
Sm. Animals & Wildlife	57%	58%	61%	68%	60%	68%	63%						63%

Live Release Rate = Live Release / (Live Release + Euthanized) * 100%; see asilomaraccords.org for further information.

The Live Release Rate does not include animals that died or were lost in care, or animals that were dead on arrival.

Spay/Neuter

Surgeries	Jan	Feb	Mar	Apr	May	Jun	Jul	Aug	Sept	Oct	Nov	Dec	YTD
Total	582	507	493	564	576	688	800						4,210
Dogs	199	172	166	155	144	153	146						1,135
Cats	383	333	327	408	432	535	654						3,072
Sm. Animals & Wildlife	-	2	-	1	-	-	-						3

Placed in Foster Care

	Jan	Feb	Mar	Apr	May	Jun	Jul	Aug	Sept	Oct	Nov	Dec	YTD
Total	152	84	113	292	371	382	383						1,777
Dogs	48	27	28	29	36	31	33						232
Cats	102	56	84	263	335	350	350						1,540
Sm. Animals & Wildlife	2	1	1	-	-	1	-						5

Month End Animal

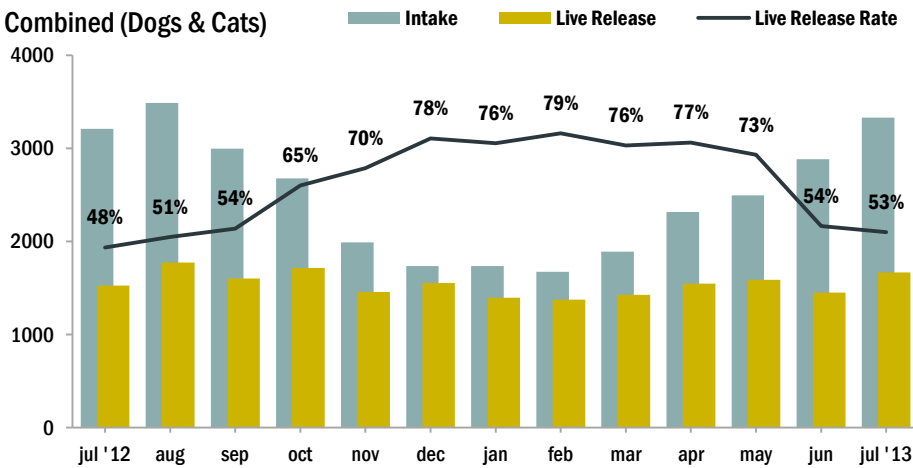
Count	Jan	Feb	Mar	Apr	May	Jun	Jul	Aug	Sept	Oct	Nov	Dec	YTD
Total	832	742	730	1,005	1,298	1,418	1,478						n/a
Dogs	219	211	203	223	206	220	237						n/a
Cats	600	519	518	762	1,061	1,162	1,205						n/a
Sm. Animals & Wildlife	13	12	9	20	31	36	36						n/a

Animal Care and Control Team of Philadelphia

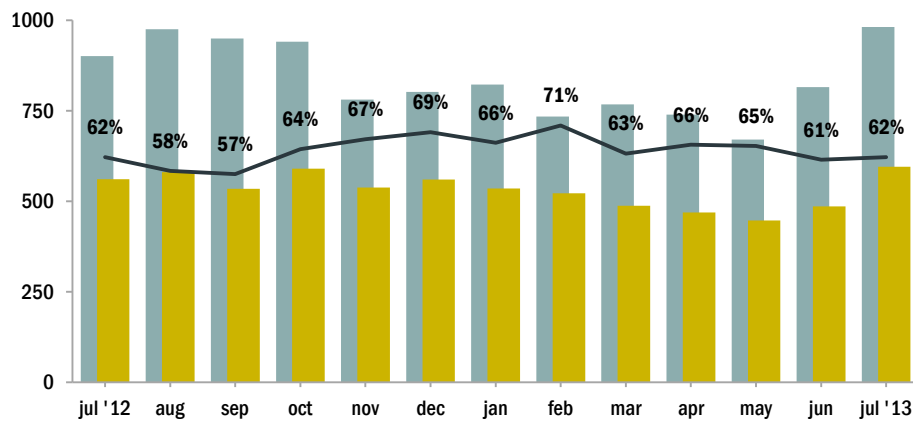
2013 Animal Care Statistics

Intake & Live Release

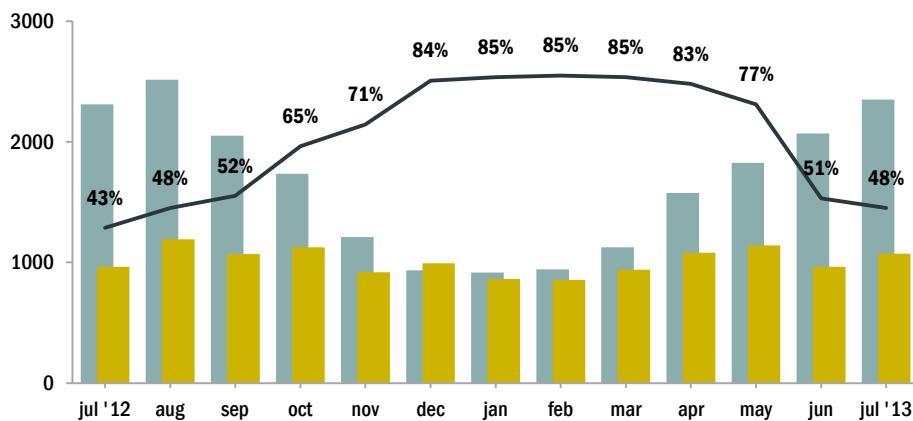
Combined (Dogs & Cats)



Dogs



Cats



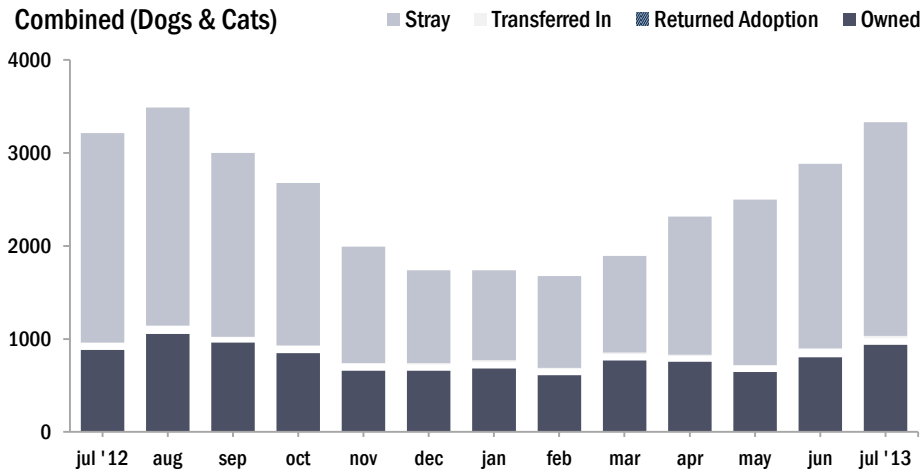
NOTES:

Live Release Rate, as dictated by the Asilomar Accords, the industry standard (see: asilomaraccords.org), is calculated by dividing Total Live Release (adoptions, transfers to partner organizations, and returns to owner) by Total Outcomes (adoptions, outgoing transfers, returns to owner, and euthanasias).

The Live Release Rate does not include animals that died or were lost in care, animals that were dead on arrival, or administrative transfers.

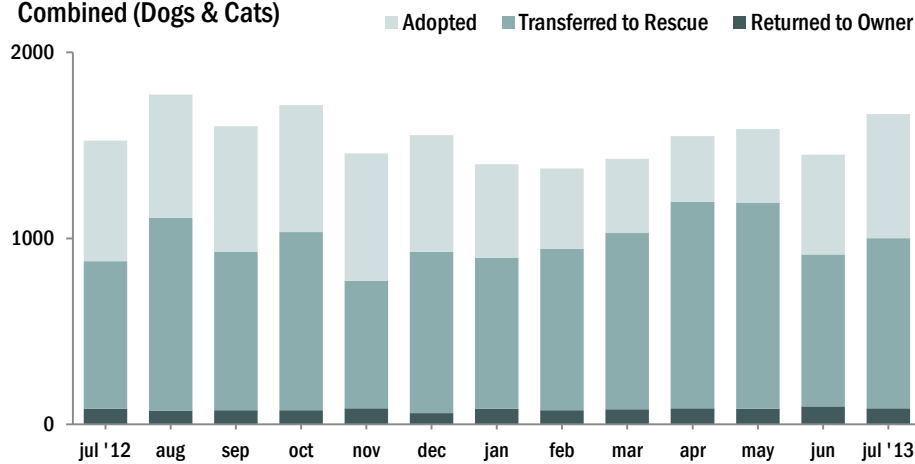
Source of Intake

Combined (Dogs & Cats)

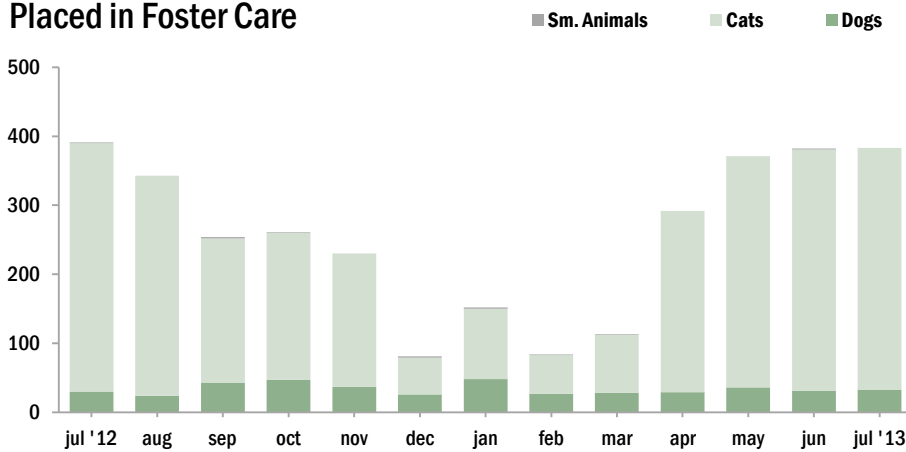


Live Releases

Combined (Dogs & Cats)



Placed in Foster Care



The Foster Care Program is one of the many life saving arms of ACCT Philly. The primary reason for foster care is to provide a temporary home for a potentially adoptable animal whose current condition is not manageable in a shelter setting and to alleviate overcrowding. ACCT Philly receives more animals than there is space, and so moving animals into foster homes not only saves them, but also ensures that newly arriving animals have cage space.

Spay/Neuter Surgeries

