

Animal Care and Control Team of Philadelphia

2013 Animal Care Statistics

All Animals	Jan	Feb	Mar	Apr	May	Jun	Jul	Aug	Sept	Oct	Nov	Dec	YTD
Intake	1,844	1,778	2,013	2,525	2,856	3,127							14,143
Stray	1,050	1,063	1,134	1,662	2,061	2,174							9,144
Owner Surrendered	705	633	792	787	698	860							4,475
Returned Adoption	73	67	69	62	67	83							421
Transferred In	16	15	18	14	30	10							103
Live Release	1,455	1,434	1,500	1,680	1,781	1,602							9,452
Adopted	508	433	400	359	409	542							2,651
Returned to Owner	86	77	81	86	85	97							512
Transferred to Rescue	861	924	1,019	1,235	1,287	963							6,289
Euthanized	475	407	502	536	708	1,299							3,927
Died or Lost in Care	49	27	24	35	77	104							316
Died	40	20	23	28	47	70							228
Missing	9	7	1	7	30	34							88

Dogs	Jan	Feb	Mar	Apr	May	Jun	Jul	Aug	Sept	Oct	Nov	Dec	YTD
Intake	822	734	767	739	670	815							4,547
Stray	429	370	367	379	390	442							2,377
Owner Surrendered	353	332	370	335	254	335							1,979
Returned Adoption	28	28	25	22	21	35							159
Transferred In	12	4	5	3	5	3							32
Live Release	535	522	487	469	447	486							2,946
Adopted	153	137	129	114	109	126							768
Returned to Owner	78	69	74	68	69	84							442
Transferred to Rescue	304	316	284	287	269	276							1,736
Euthanized	274	214	284	246	238	305							1,561
Died or Lost in Care	4	5	4	4	2	8							27
Died	3	5	4	4	2	7							25
Missing	1	-	-	-	-	1							2

Animal Care and Control Team of Philadelphia

2013 Animal Care Statistics

Cats

	Jan	Feb	Mar	Apr	May	Jun	Jul	Aug	Sept	Oct	Nov	Dec	YTD
Intake	916	942	1,125	1,577	1,826	2,068							8,454
Stray	539	616	670	1,106	1,386	1,544							5,861
Owner Surrendered	328	278	398	420	391	469							2,284
Returned Adoption	45	39	44	40	44	48							260
Transferred In	4	9	13	11	5	7							49
Live Release	863	854	940	1,080	1,141	964							5,842
Adopted	351	294	269	240	288	410							1,852
Returned to Owner	7	8	7	18	16	13							69
Transferred to Rescue	505	552	664	822	837	541							3,921
Euthanized	158	151	172	227	340	924							1,972
Died or Lost in Care	43	19	15	27	48	79							231
Died	35	12	14	23	41	61							186
Missing	8	7	1	4	7	18							45

Small Animals & Wildlife

	Jan	Feb	Mar	Apr	May	Jun	Jul	Aug	Sept	Oct	Nov	Dec	YTD
Intake	106	102	121	209	360	244							1,142
Stray or Wildlife	82	77	97	177	285	188							906
Owner Surrendered	24	23	24	32	53	56							212
Returned Adoption	-	-	-	-	2	-							2
Transferred In	-	2	-	-	20	-							22
Live Release	57	58	73	131	193	152							664
Adopted	4	2	2	5	12	6							31
Returned to Owner	1	-	-	-	-	-							1
Transferred or Released	52	56	71	126	181	146							632
Euthanized	43	42	46	63	130	70							394
Died or Lost in Care	2	3	5	4	27	17							58
Died	2	3	5	1	4	2							17
Missing	-	-	-	3	23	15							41

Animal Care and Control Team of Philadelphia

2013 Animal Care Statistics

Live Release Rate	Jan	Feb	Mar	Apr	May	Jun	Jul	Aug	Sept	Oct	Nov	Dec	YTD
Total	75%	78%	75%	76%	72%	55%							71%
Dogs	66%	71%	63%	66%	65%	61%							65%
Cats	85%	85%	85%	83%	77%	51%							75%
Sm. Animals & Wildlife	57%	58%	61%	68%	60%	68%							63%

Live Release Rate = Live Release / (Live Release + Euthanized) * 100%; see asilomaraccords.org for further information.

The Live Release Rate does not include animals that died or were lost in care, or animals that were dead on arrival.

Spay/Neuter

Surgeries	Jan	Feb	Mar	Apr	May	Jun	Jul	Aug	Sept	Oct	Nov	Dec	YTD
Total	582	507	493	564	576	688							3,410
Dogs	199	172	166	155	144	153							989
Cats	383	333	327	408	432	535							2,418
Sm. Animals & Wildlife	-	2	-	1	-	-							3

Placed in Foster Care

	Jan	Feb	Mar	Apr	May	Jun	Jul	Aug	Sept	Oct	Nov	Dec	YTD
Total	152	84	113	292	371	382							1,394
Dogs	48	27	28	29	36	31							199
Cats	102	56	84	263	335	350							1,190
Sm. Animals & Wildlife	2	1	1	-	-	1							5

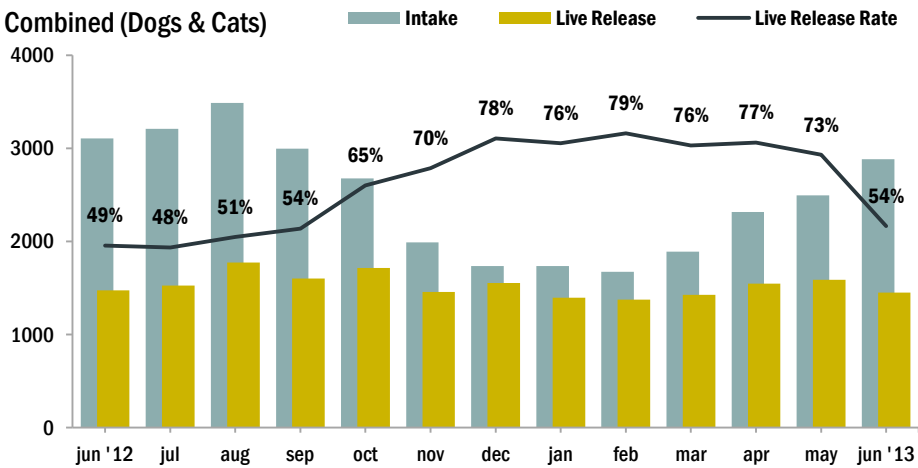
Month End Animal

Count	Jan	Feb	Mar	Apr	May	Jun	Jul	Aug	Sept	Oct	Nov	Dec	YTD
Total	832	742	730	1,005	1,298	1,418							n/a
Dogs	219	211	203	223	206	220							n/a
Cats	600	519	518	762	1,061	1,162							n/a
Sm. Animals & Wildlife	13	12	9	20	31	36							n/a

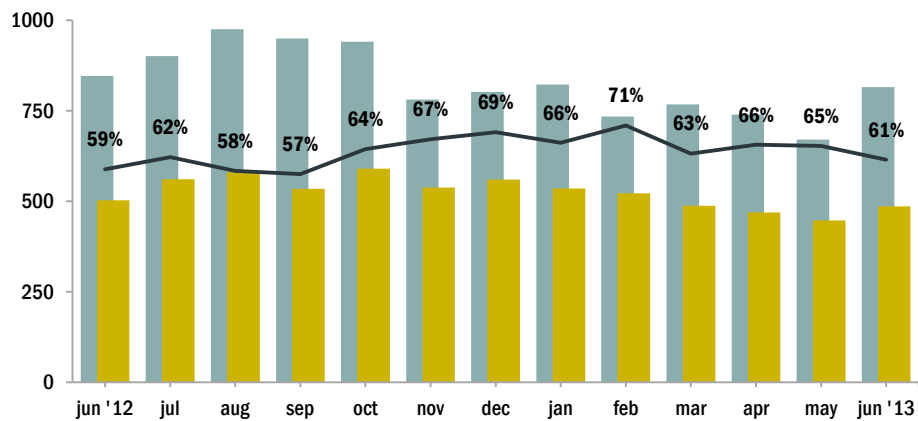
Animal Care and Control Team of Philadelphia

2013 Animal Care Statistics

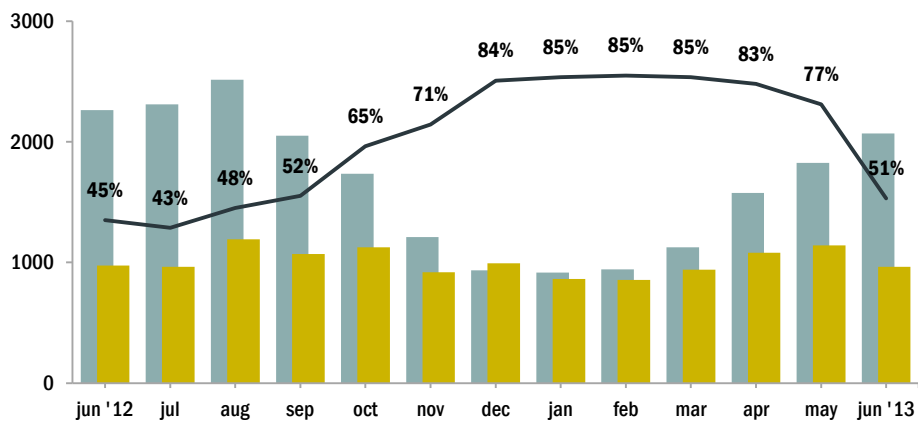
Intake & Live Release Combined (Dogs & Cats)



Dogs



Cats



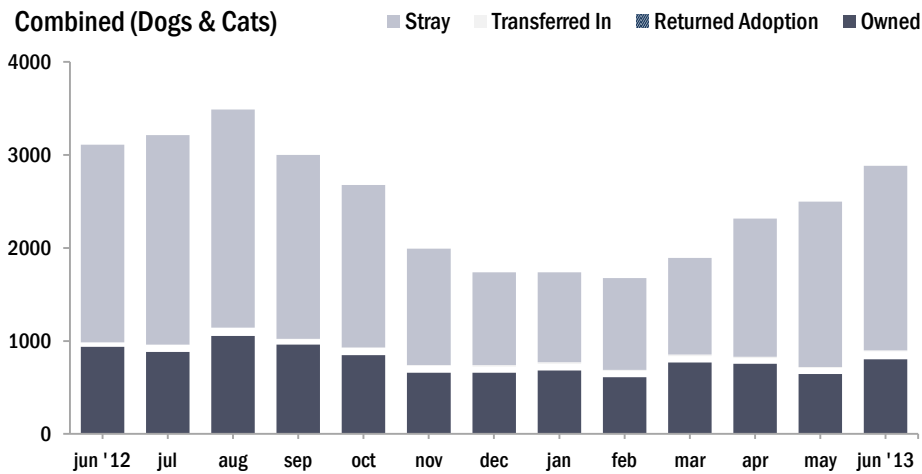
NOTES:

Live Release Rate, as dictated by the Asilomar Accords, the industry standard (see: asilomaraccords.org), is calculated by dividing Total Live Release (adoptions, transfers to partner organizations, and returns to owner) by Total Outcomes (adoptions, outgoing transfers, returns to owner, and euthanasias).

The Live Release Rate does not include animals that died or were lost in care, animals that were dead on arrival, or administrative transfers.

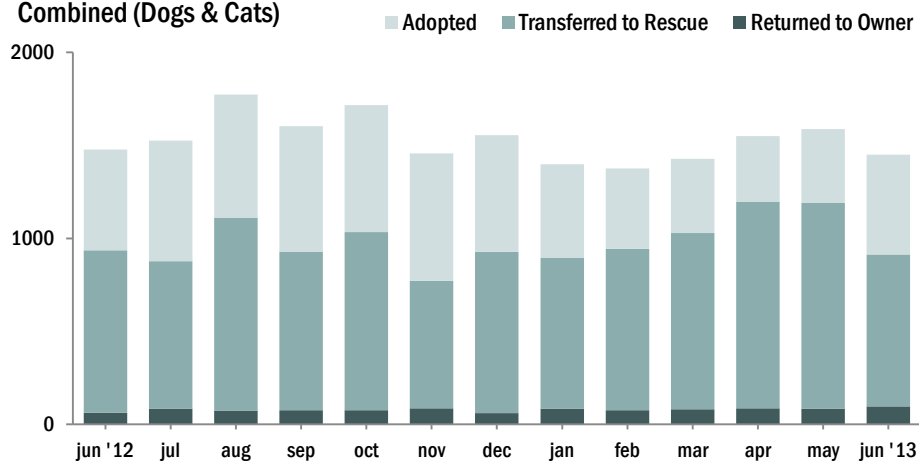
Source of Intake

Combined (Dogs & Cats)

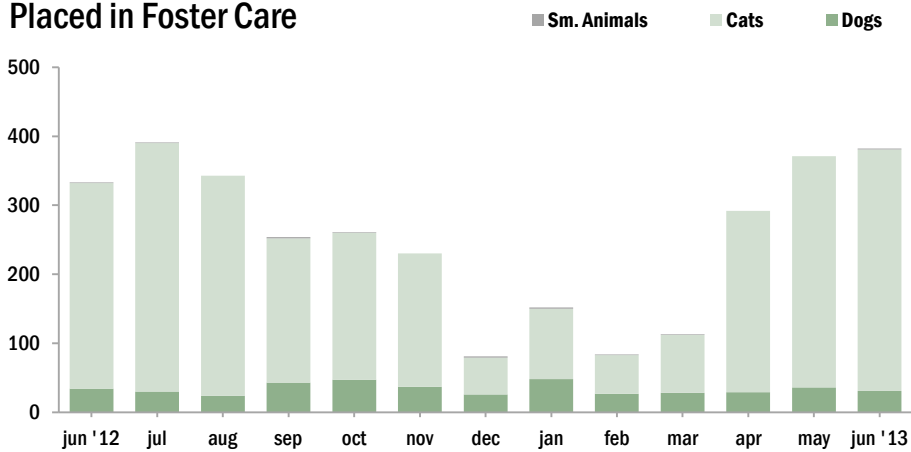


Live Releases

Combined (Dogs & Cats)



Placed in Foster Care



The Foster Care Program is one of the many life saving arms of ACCT Philly. The primary reason for foster care is to provide a temporary home for a potentially adoptable animal whose current condition is not manageable in a shelter setting and to alleviate overcrowding. ACCT Philly receives more animals than there is space, and so moving animals into foster homes not only saves them, but also ensures that newly arriving animals have cage space.

Spay/Neuter Surgeries

