

Animal Care and Control Team of Philadelphia

2013 Animal Care Statistics

All Animals	Jan	Feb	Mar	Apr	May	Jun	Jul	Aug	Sept	Oct	Nov	Dec	YTD
Intake	1,844	1,778	2,013	2,525									8,160
Stray	1,050	1,063	1,134	1,662									4,909
Owner Surrendered	705	633	792	787									2,917
Returned Adoption	73	67	69	62									271
Transferred In	16	15	18	14									63
Live Release	1,455	1,434	1,500	1,680									6,069
Adopted	508	433	400	359									1,700
Returned to Owner	86	77	81	86									330
Transferred to Rescue	861	924	1,019	1,235									4,039
Euthanized	475	407	502	536									1,920
Died or Lost in Care	49	27	24	35									135
Died	40	20	23	28									111
Missing	9	7	1	7									24

Dogs	Jan	Feb	Mar	Apr	May	Jun	Jul	Aug	Sept	Oct	Nov	Dec	YTD
Intake	822	734	767	739									3,062
Stray	429	370	367	379									1,545
Owner Surrendered	353	332	370	335									1,390
Returned Adoption	28	28	25	22									103
Transferred In	12	4	5	3									24
Live Release	535	522	487	469									2,013
Adopted	153	137	129	114									533
Returned to Owner	78	69	74	68									289
Transferred to Rescue	304	316	284	287									1,191
Euthanized	274	214	284	246									1,018
Died or Lost in Care	4	5	4	4									17
Died	3	5	4	4									16
Missing	1	-	-	-									1

Animal Care and Control Team of Philadelphia

2013 Animal Care Statistics

Cats

	Jan	Feb	Mar	Apr	May	Jun	Jul	Aug	Sept	Oct	Nov	Dec	YTD
Intake	916	942	1,125	1,577									4,560
Stray	539	616	670	1,106									2,931
Owner Surrendered	328	278	398	420									1,424
Returned Adoption	45	39	44	40									168
Transferred In	4	9	13	11									37
Live Release	863	854	940	1,080									3,737
Adopted	351	294	269	240									1,154
Returned to Owner	7	8	7	18									40
Transferred to Rescue	505	552	664	822									2,543
Euthanized	158	151	172	227									708
Died or Lost in Care	43	19	15	27									104
Died	35	12	14	23									84
Missing	8	7	1	4									20

Small Animals & Wildlife

	Jan	Feb	Mar	Apr	May	Jun	Jul	Aug	Sept	Oct	Nov	Dec	YTD
Intake	106	102	121	209									538
Stray or Wildlife	82	77	97	177									433
Owner Surrendered	24	23	24	32									103
Returned Adoption	-	-	-	-									-
Transferred In	-	2	-	-									2
Live Release	57	58	73	131									319
Adopted	4	2	2	5									13
Returned to Owner	1	-	-	-									1
Transferred or Released	52	56	71	126									305
Euthanized	43	42	46	63									194
Died or Lost in Care	2	3	5	4									14
Died	2	3	5	1									11
Missing	-	-	-	3									3

Animal Care and Control Team of Philadelphia

2013 Animal Care Statistics

Live Release Rate	Jan	Feb	Mar	Apr	May	Jun	Jul	Aug	Sept	Oct	Nov	Dec	YTD
Total	75%	78%	75%	76%									76%
Dogs	66%	71%	63%	66%									66%
Cats	85%	85%	85%	83%									84%
Sm. Animals & Wildlife	57%	58%	61%	68%									62%

Live Release Rate = Live Release / (Live Release + Euthanized) * 100%; see asilomaraccords.org for further information.

The Live Release Rate does not include animals that died or were lost in care, or animals that were dead on arrival.

Spay/Neuter

Surgeries	Jan	Feb	Mar	Apr	May	Jun	Jul	Aug	Sept	Oct	Nov	Dec	YTD
Total	582	507	493	564									2,146
Dogs	199	172	166	155									692
Cats	383	333	327	408									1,451
Sm. Animals & Wildlife	-	2	-	1									3

Placed in Foster Care

	Jan	Feb	Mar	Apr	May	Jun	Jul	Aug	Sept	Oct	Nov	Dec	YTD
Total	152	84	113	292									641
Dogs	48	27	28	29									132
Cats	102	56	84	263									505
Sm. Animals & Wildlife	2	1	1	-									4

Month End Animal

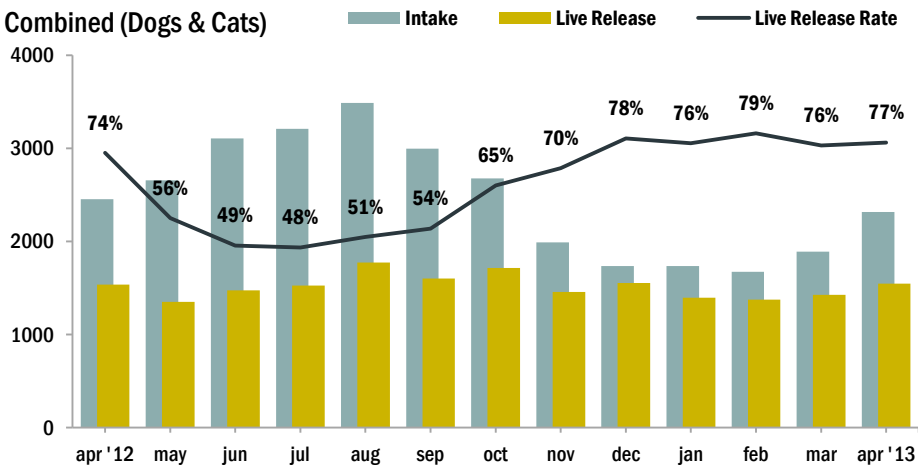
Count	Jan	Feb	Mar	Apr	May	Jun	Jul	Aug	Sept	Oct	Nov	Dec	YTD
Total	832	742	730	1,005									n/a
Dogs	219	211	203	223									n/a
Cats	600	519	518	762									n/a
Sm. Animals & Wildlife	13	12	9	20									n/a

Animal Care and Control Team of Philadelphia

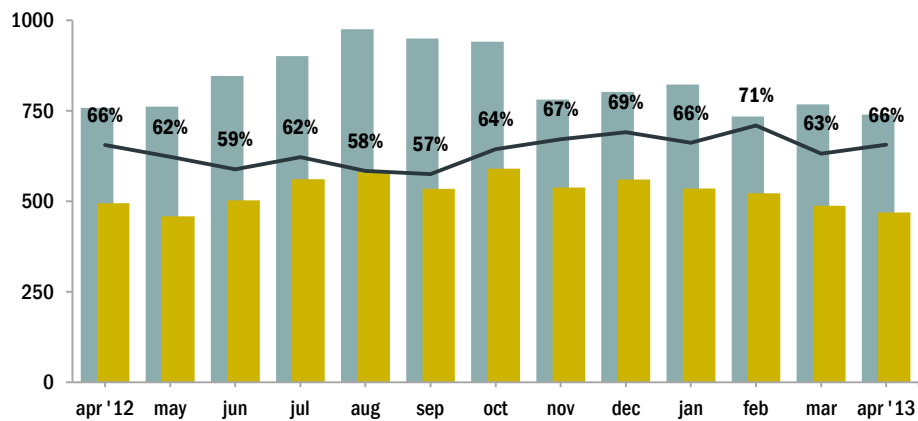
2013 Animal Care Statistics

Intake & Live Release

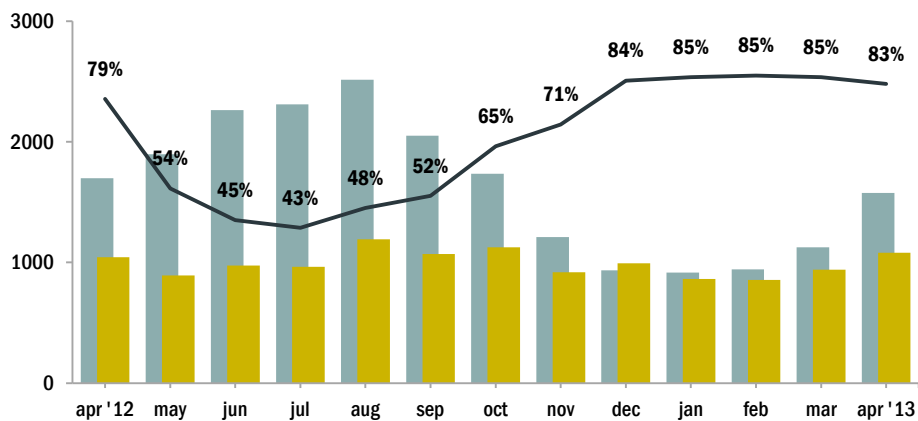
Combined (Dogs & Cats)



Dogs



Cats



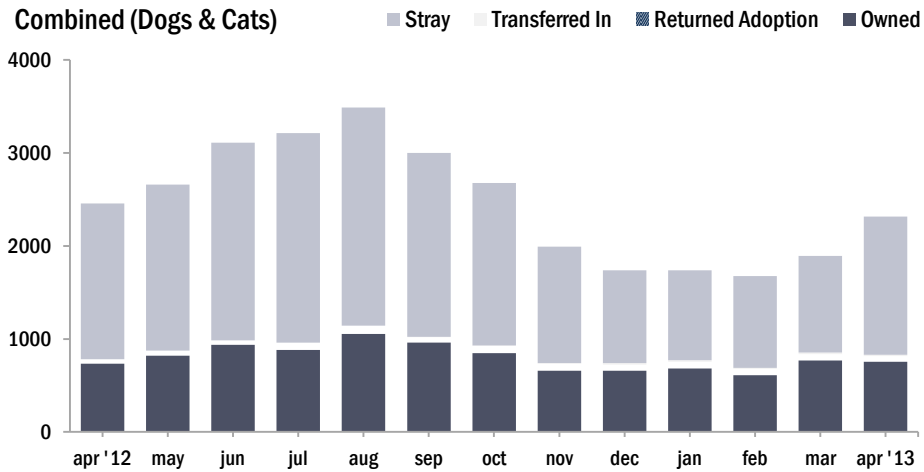
NOTES:

Live Release Rate, as dictated by the Asilomar Accords, by the industry standard (see: asilomaraccords.org), is calculated by dividing Total Live Release (adoptions, transfers to partner organizations, and returns to owner) by Total Outcomes (adoptions, outgoing transfers, returns to owner, and euthanasias).

The Live Release Rate does not include animals that died or were lost in care, animals that were dead on arrival, or administrative transfers.

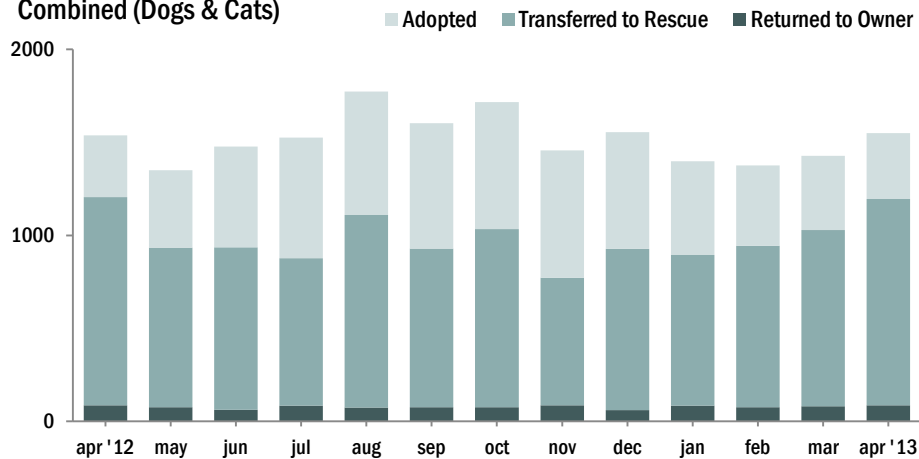
Source of Intake

Combined (Dogs & Cats)

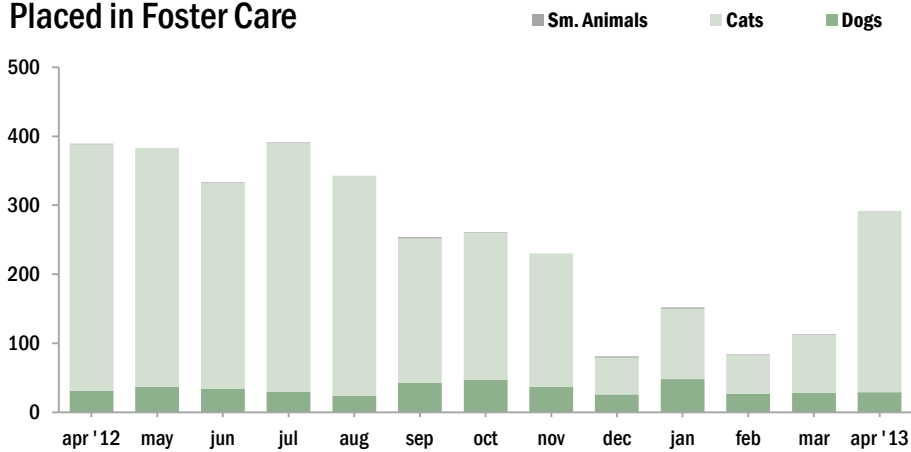


Live Releases

Combined (Dogs & Cats)



Placed in Foster Care



The Foster Care Program is one of the many life saving arms of ACCT Philly. The primary reason for foster care is to provide a temporary home for a potentially adoptable animal whose current condition is not manageable in a shelter setting and to alleviate overcrowding. ACCT Philly receives more animals than there is space, and so moving animals into foster homes not only saves them, but also ensures that newly arriving animals have cage space.

Spay/Neuter Surgeries

